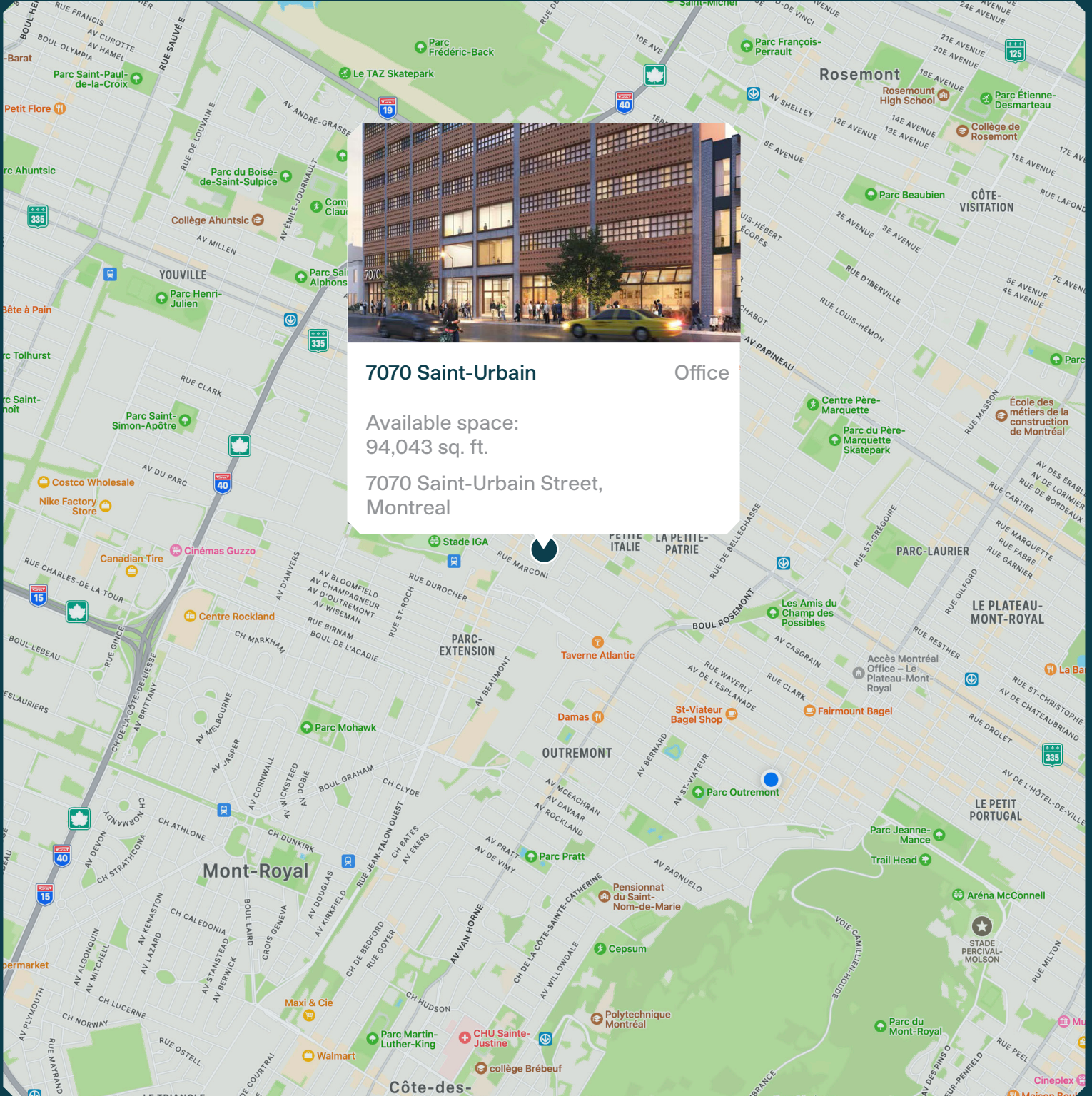


7070 Saint-Urbain

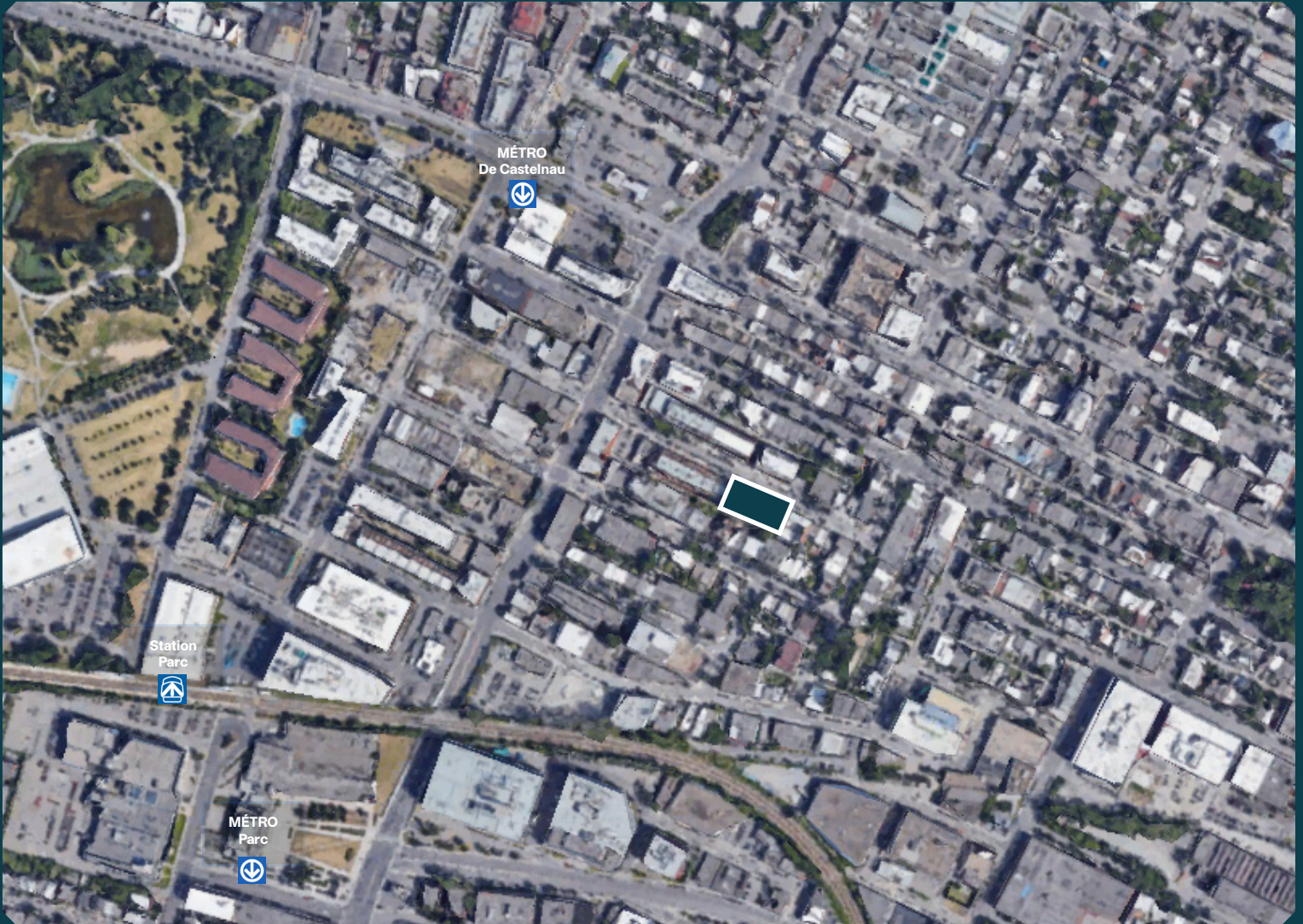


MONTONI

Building on our word
for tomorrow



Neighbourhood Map



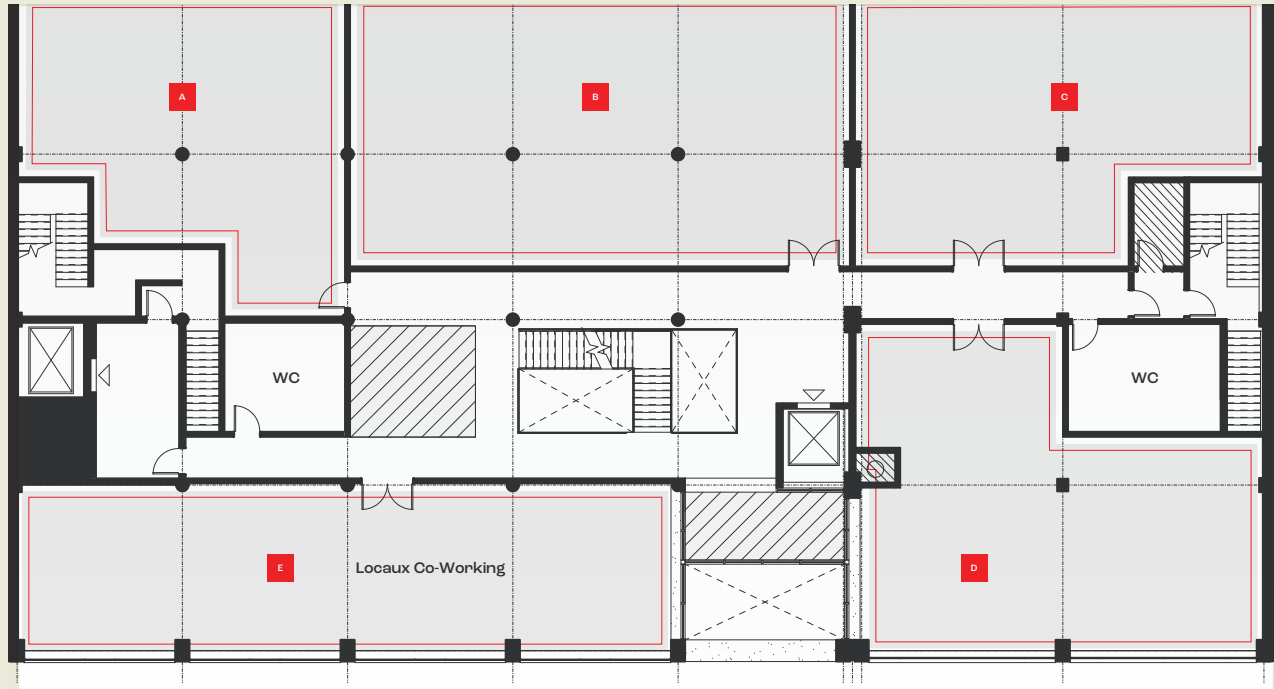
AVAILABLE SPACE

Total area - 94,043 sq. ft.

ACCESS

Easy access to highways 40, 15, 19
In walking distance of De Castelneau & Parc metro stations
Close proximity to Parc Train Station

Floor Plan



Saint-Urbain Street

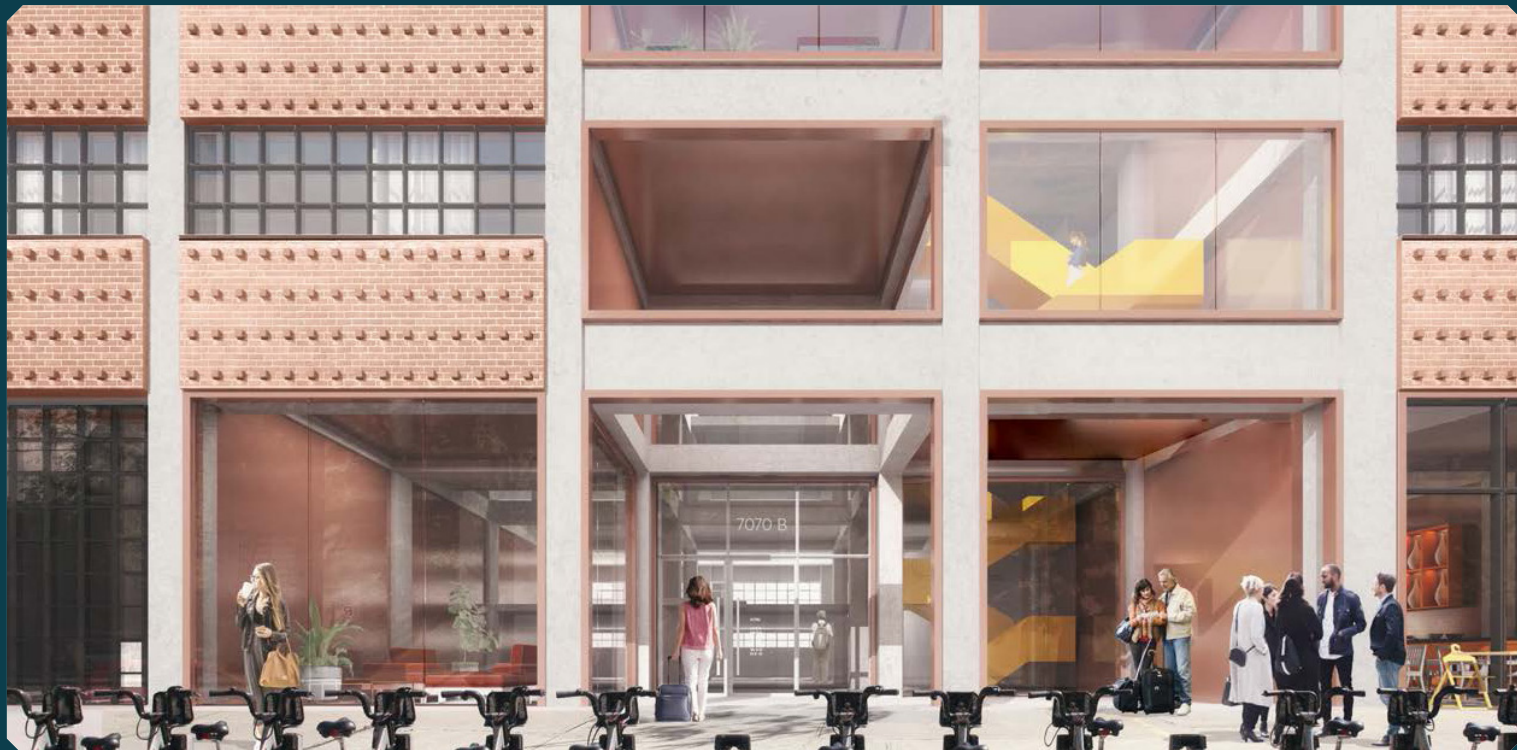


Saint-Urbain Street

Perspectives



Perspectives



Summary



Projected certifications

Relevant Information



LEED

(Leadership in Energy and Environmental Design) is a rating system recognized in 150 countries and is designed to leave a legacy of high-quality, environmentally friendly buildings with a reduced impact on the environment.

- Start of construction - Design build
- Available space:
Total - 94,043 sq. ft.
- Drive-in garage door - Total of one (1) door

MONTONI

For any questions related to this
presentation, please contact:
abouchard@groupemontoni.com