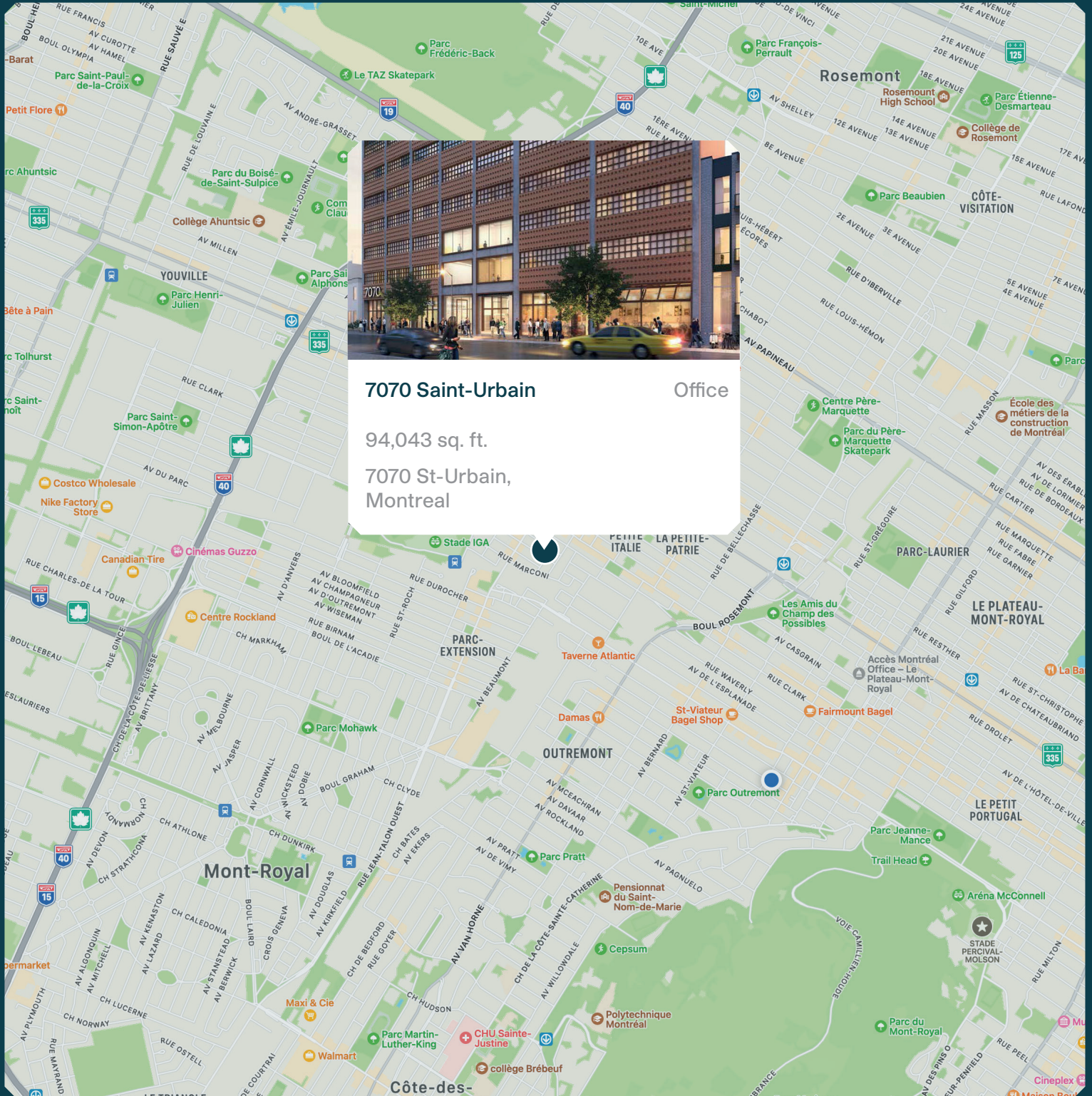


7070 Saint-Urbain



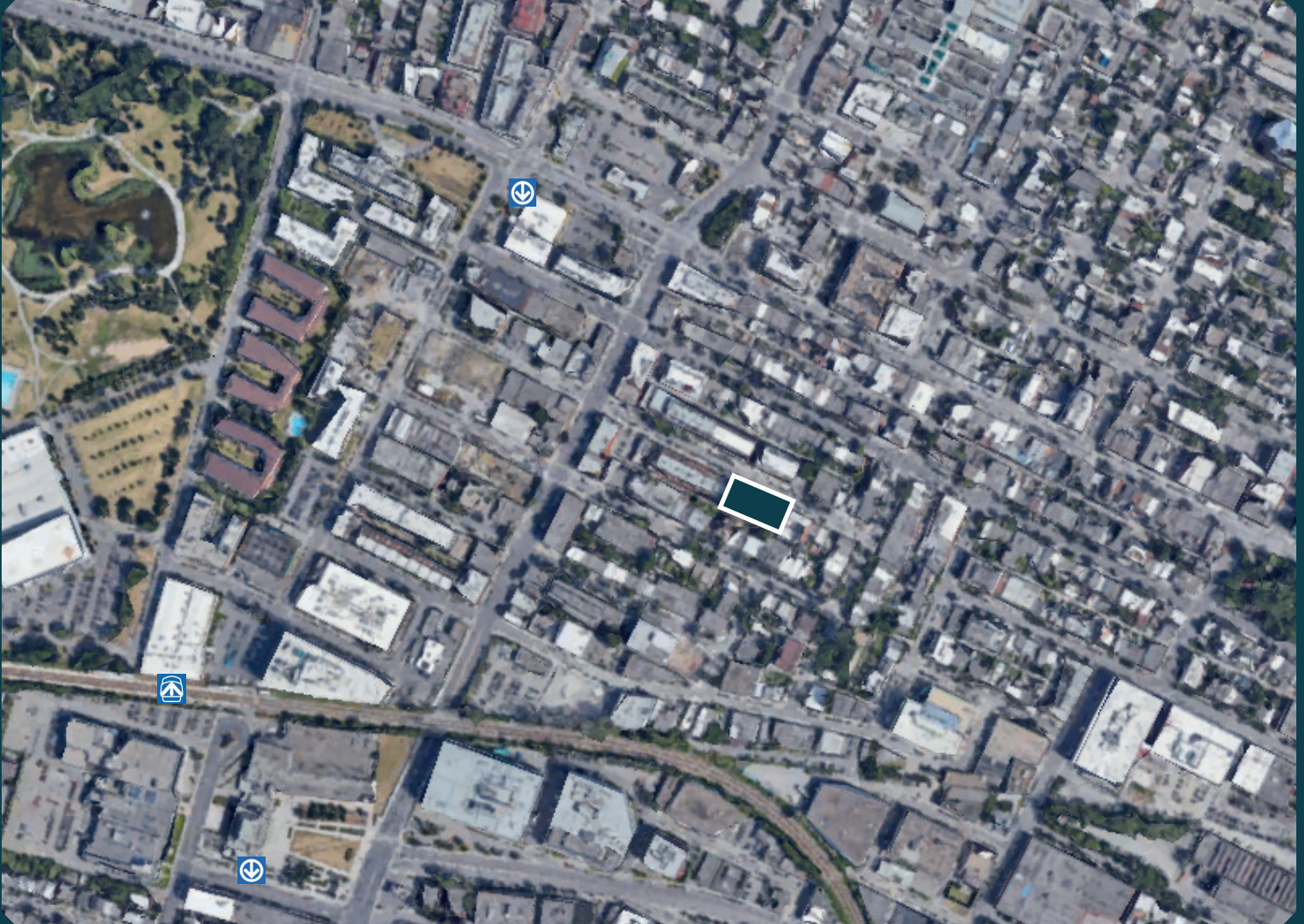
MONTONI

Building on our word
for tomorrow



7070 Saint-Urbain Office
94,043 sq. ft.
7070 St-Urbain,
Montreal

Neighborhood Map



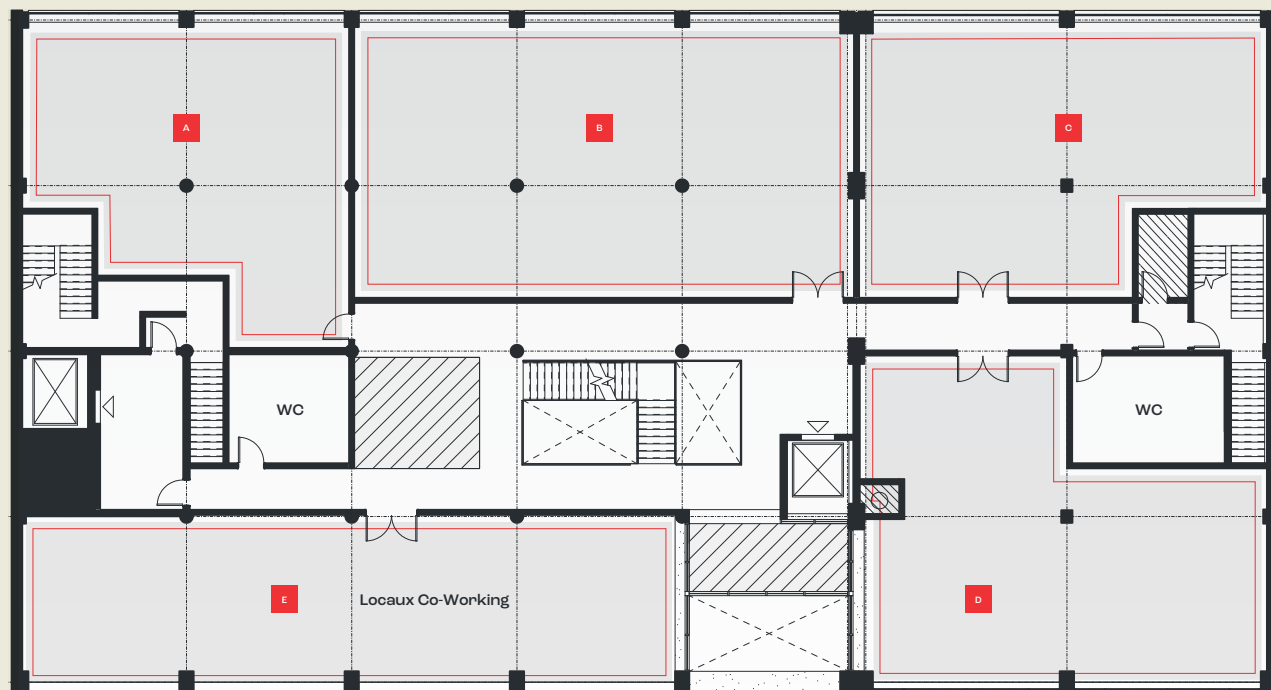
BUILDING

Total area: 94,043 sq. ft.

ACCESS

Access to highways 40, 15, 19
Metro De Castelneau, Parc
Train Parc
Bus 55, 80, 92, 93, 363, 372, 480

Floor plan



BUILDING 94,043 sq. ft.

Perspectives



Perspectives



Summary



Certification aimed

Relevant Information



LEED

(Leadership in Energy and Environmental Design) is a rating system recognized in 150 countries and is designed to leave a legacy of high-quality, environmentally friendly buildings with a reduced impact on the environment.

- Available area : 94 043 sq. ft.
- Drive-in garage door : Total of one (1) door

MONTONI

For any questions related to this
presentation, please contact:
abouchard@groupemontoni.com