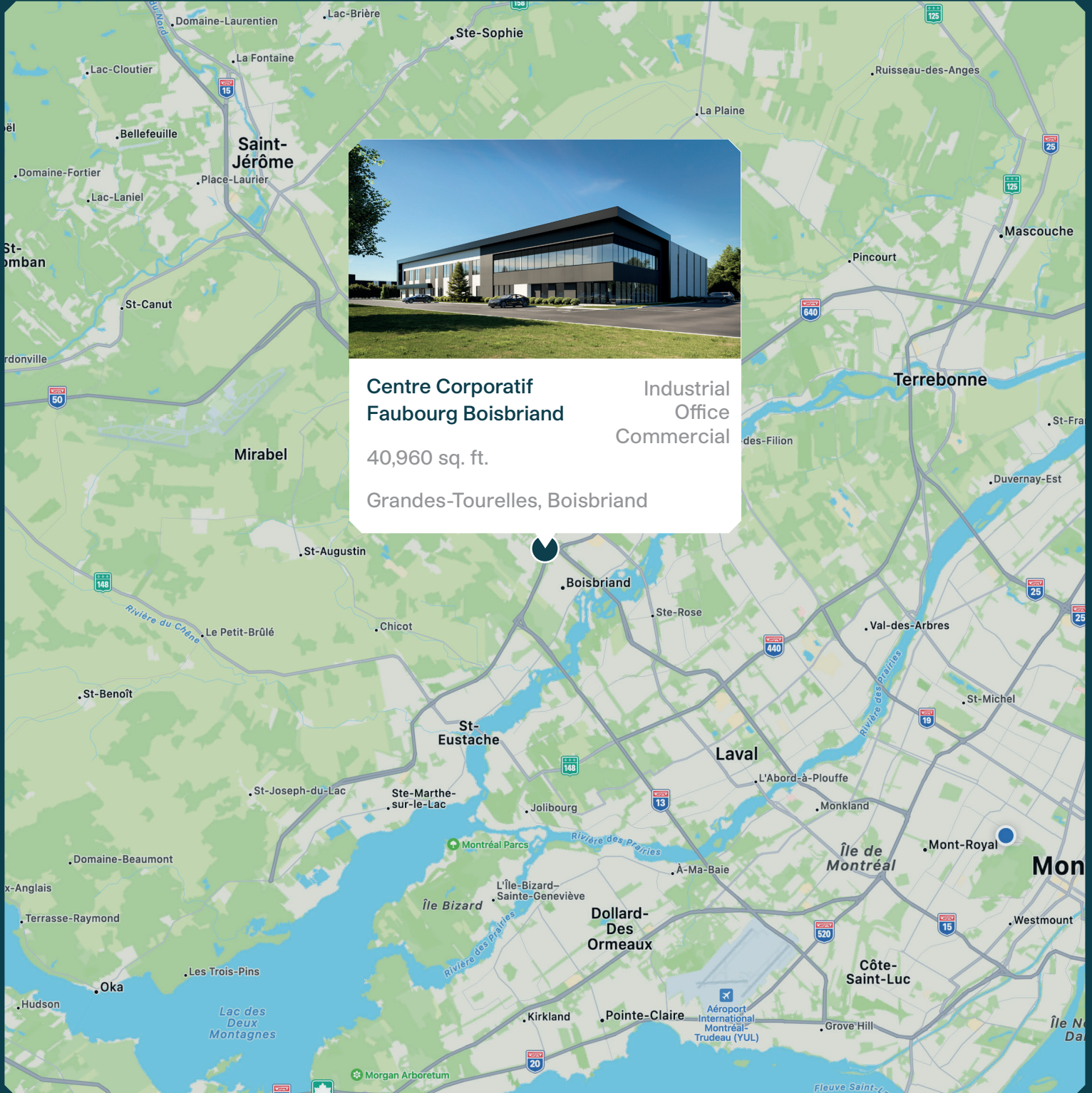


Centre Corporatif Faubourg Boisbriand





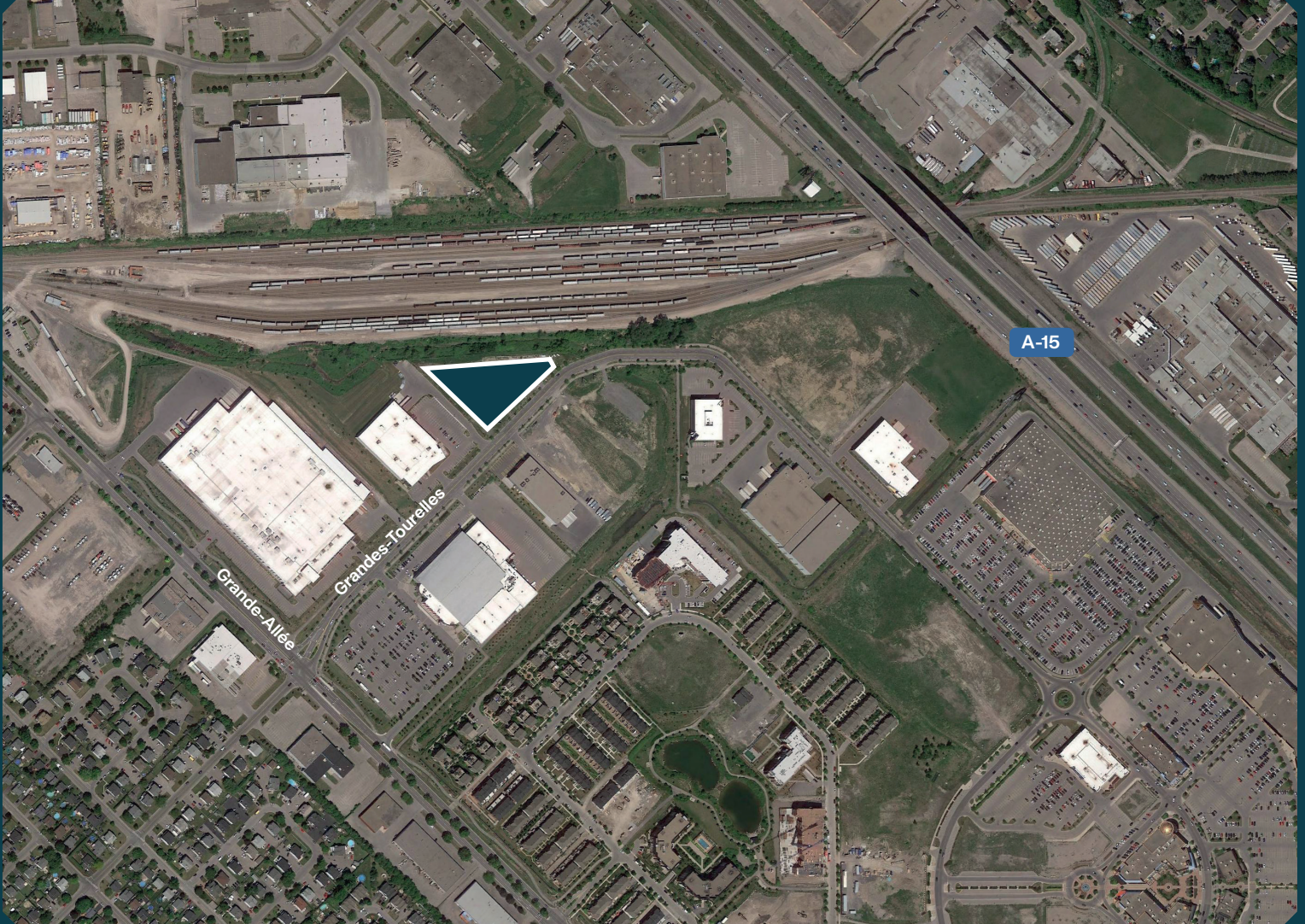
**Centre Corporatif
Faubourg Boisbriand**

Industrial
Office
Commercial

40,960 sq. ft.

Grandes-Tourelles, Boisbriand

Neighborhood Map



LAND

Total area : 139,532 sq. ft

BUILDING

Available space : 40, 960 sq. ft.

ACCESS

Des Grandes-Tourelles, Boisbriand
Available parking spaces
Easy access to Highway 15, 640
Bus 51, 52, 59

Site plan



01 - 40,960 sq. ft.

Summary




Certifications aimed



DISTINCTION by MONTONI

Distinction by MONTONI makes it possible to carry out a greater number of sustainable projects, while optimizing the well-being of their occupants.

Relevant Information

- Total area: 139,532 sq. ft.
- Total building area : 40,960 sq. ft.
- Parking : Total of 32 spaces, including 1 x 
- Drive-in garage doors:
Total of One (1) door – Dim : 14'-0" x 14'-0"
- Loading dock doors:
Total of Three (3) doors – Dim : 9'-0" x 10'0"
- Galvanised hydraulic dock levelers - Capacity : 40,000 lbs
- Clear height - Warehouse : 32 ft.
- Fire protection – ESFR
- Building electrical entrance: 600 A
- Warehouse lighting - LED fixtures yielding 350 lux

MONTONI

For any questions related to this
presentation, please contact:
abouchard@groupemontoni.com