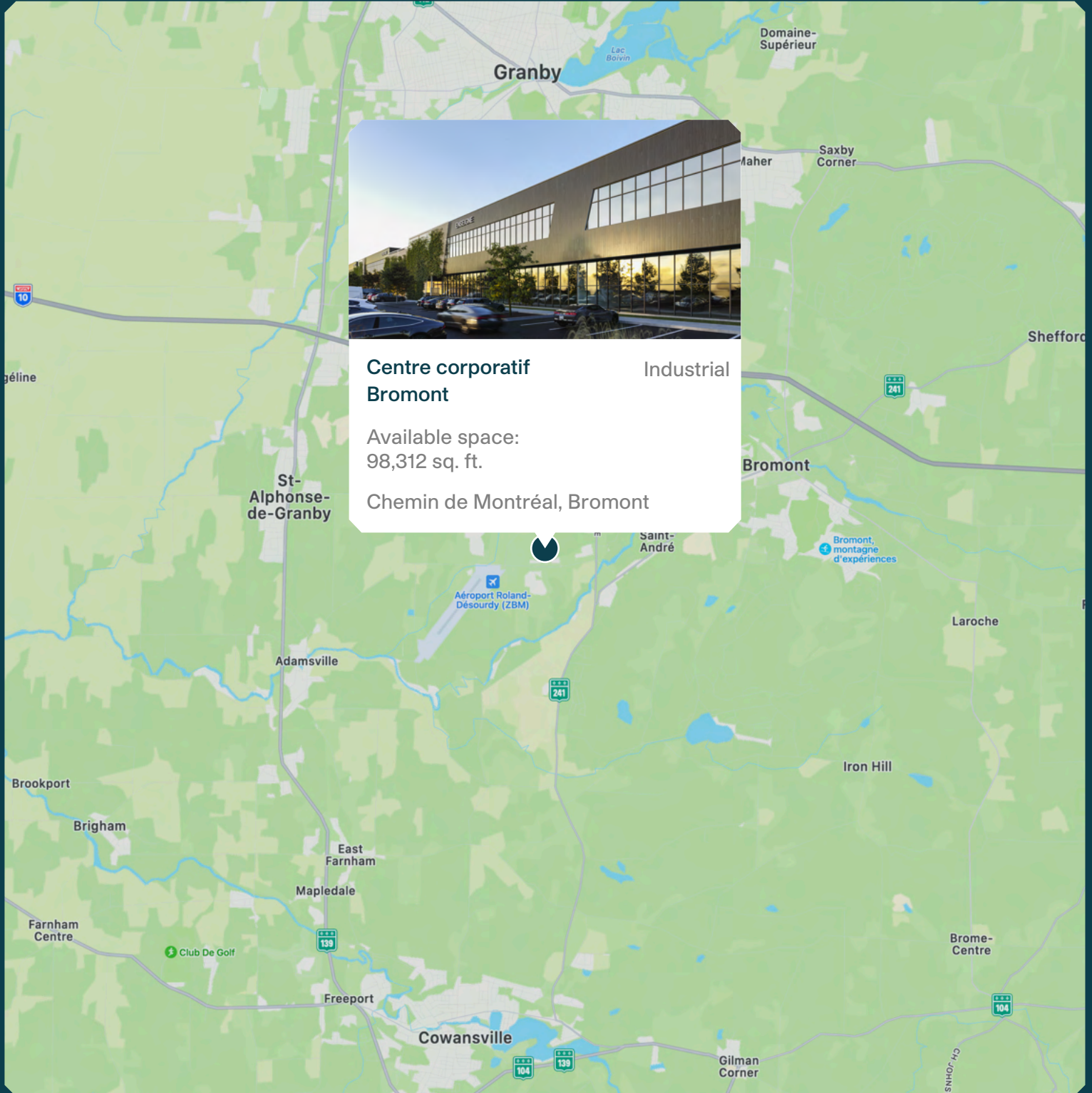


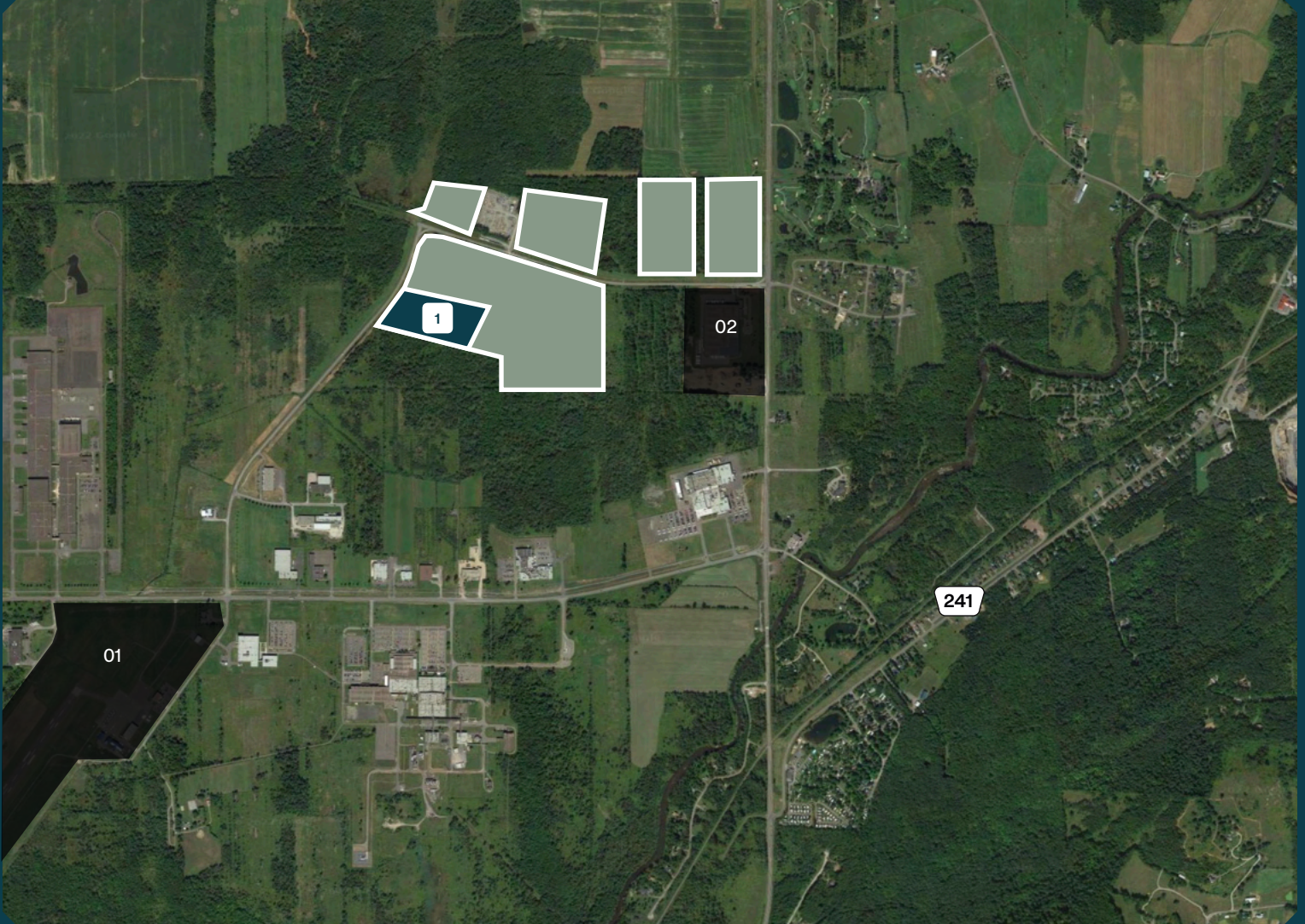
# Centre corporatif Bromont







# Neighbourhood Map



## LAND

Total area - 10,000,000 sq. ft.

01 - Airport Roland-Désourdy

02 - ABB

## BUILDING

**1** Phase 1  
Available space - 98,312 sq. ft.

## ACCESS

Chemin de Montréal, Bromont  
Easy access to highways 10, 241

# Site Plan - Phase 1

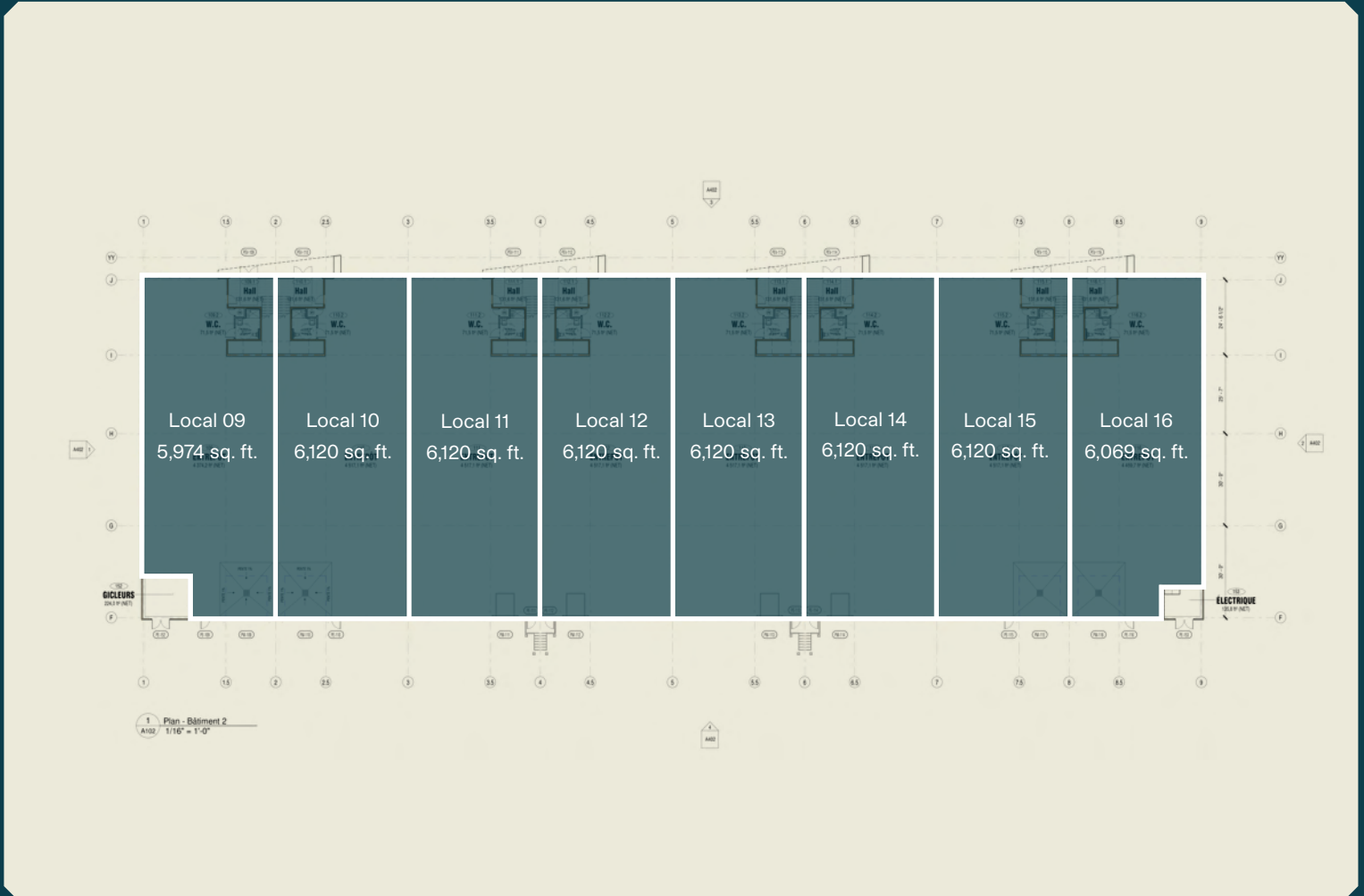


# Site Plan - Phase 1 Building 1



# Site Plan - Phase 1

## Building 2





# Summary



## Projected Certifications



### LEED

(Leadership in Energy and Environmental Design) is a rating system recognized in 150 countries and is designed to leave a legacy of high-quality, environmentally friendly buildings with a reduced impact on the environment.

## Relevant Information

- Start of construction - Q2 2025
- Available - Q1 2026
- Total land area - 10,000,000 sq. ft.
- Up to sixteen (16) potential units
- Available space:

### Phase 1

Building 1 - 49,156 sq. ft.  
 Building 2 - 49,156 sq. ft.  
 Total available area - 98,312 sq. ft.  
 Starting from 5,974 sq. ft.

# MONTONI

For any questions related to this  
presentation, please contact:  
[abouchard@groupemontoni.com](mailto:abouchard@groupemontoni.com)