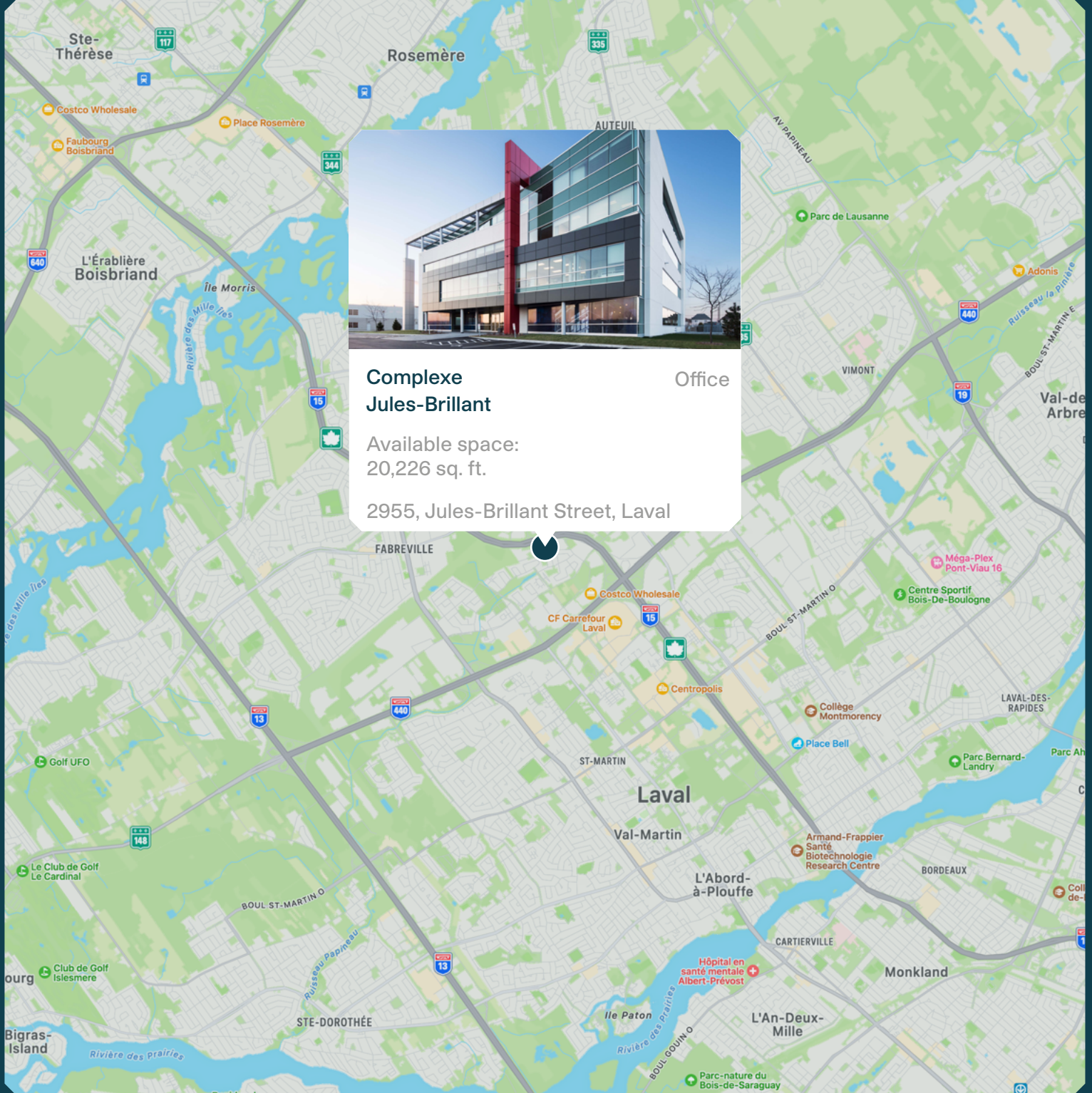


Complexe Jules-Brillant



MONTONI

Building on our word
for tomorrow

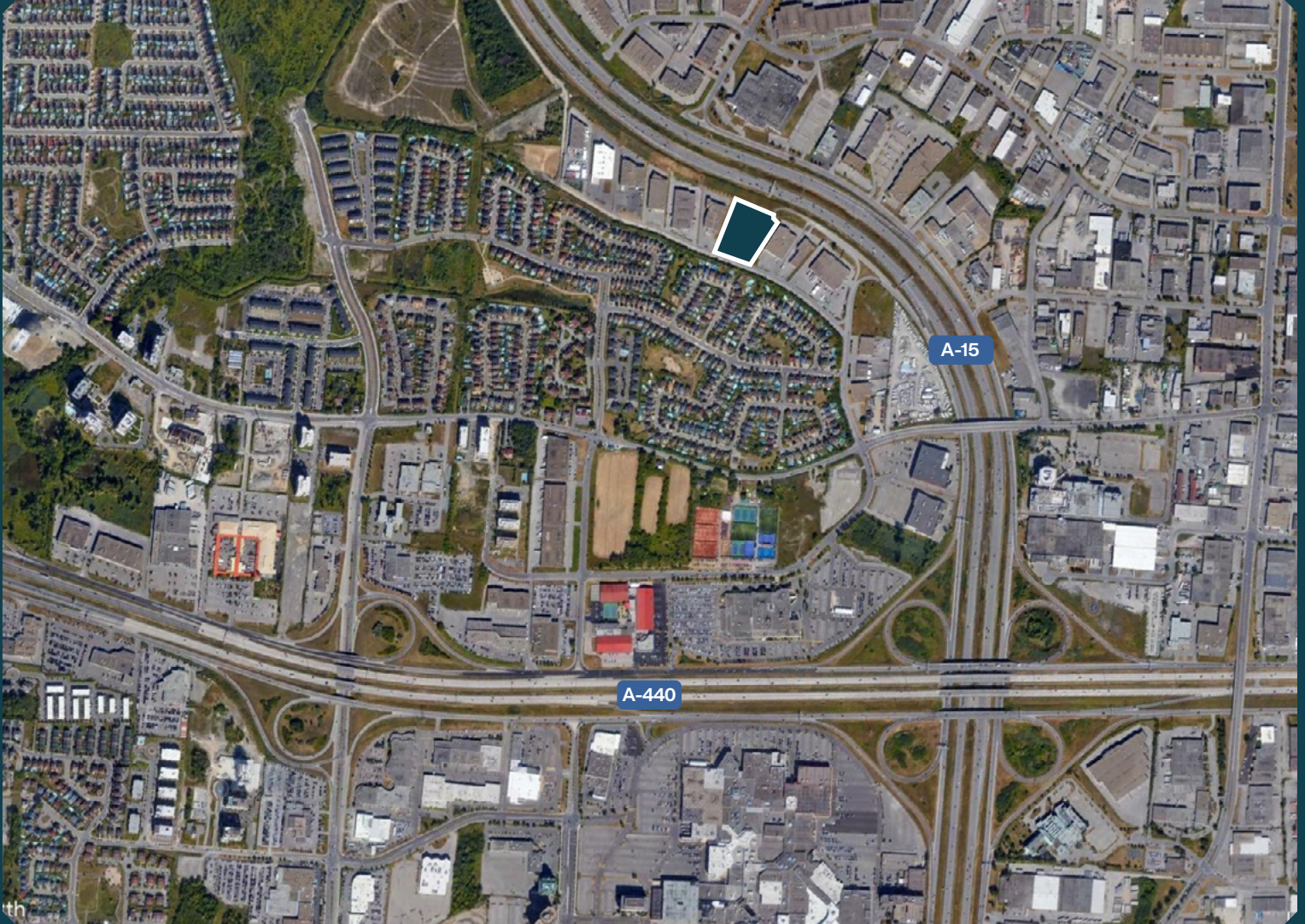


Complexe Jules-Brillant Office

Available space:
20,226 sq. ft.

2955, Jules-Brillant Street, Laval

Neighborhood Map



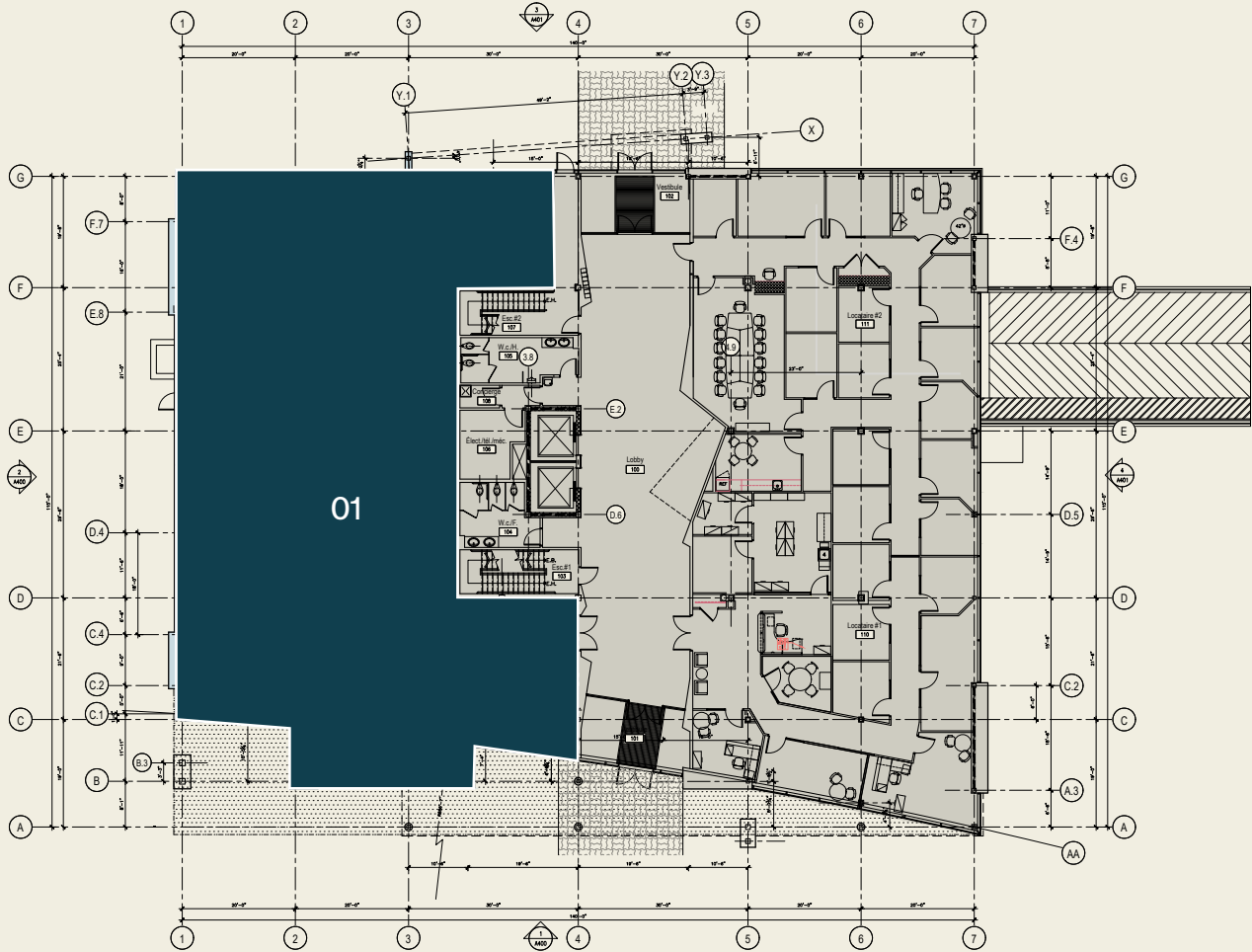
BUILDING

Available Space - 20,226 sq. ft.
Ground floor - 6,868 sq. ft.
3rd floor - 5,782 sq. ft.
4th floor - 7,576 sq. ft.

ACCESS

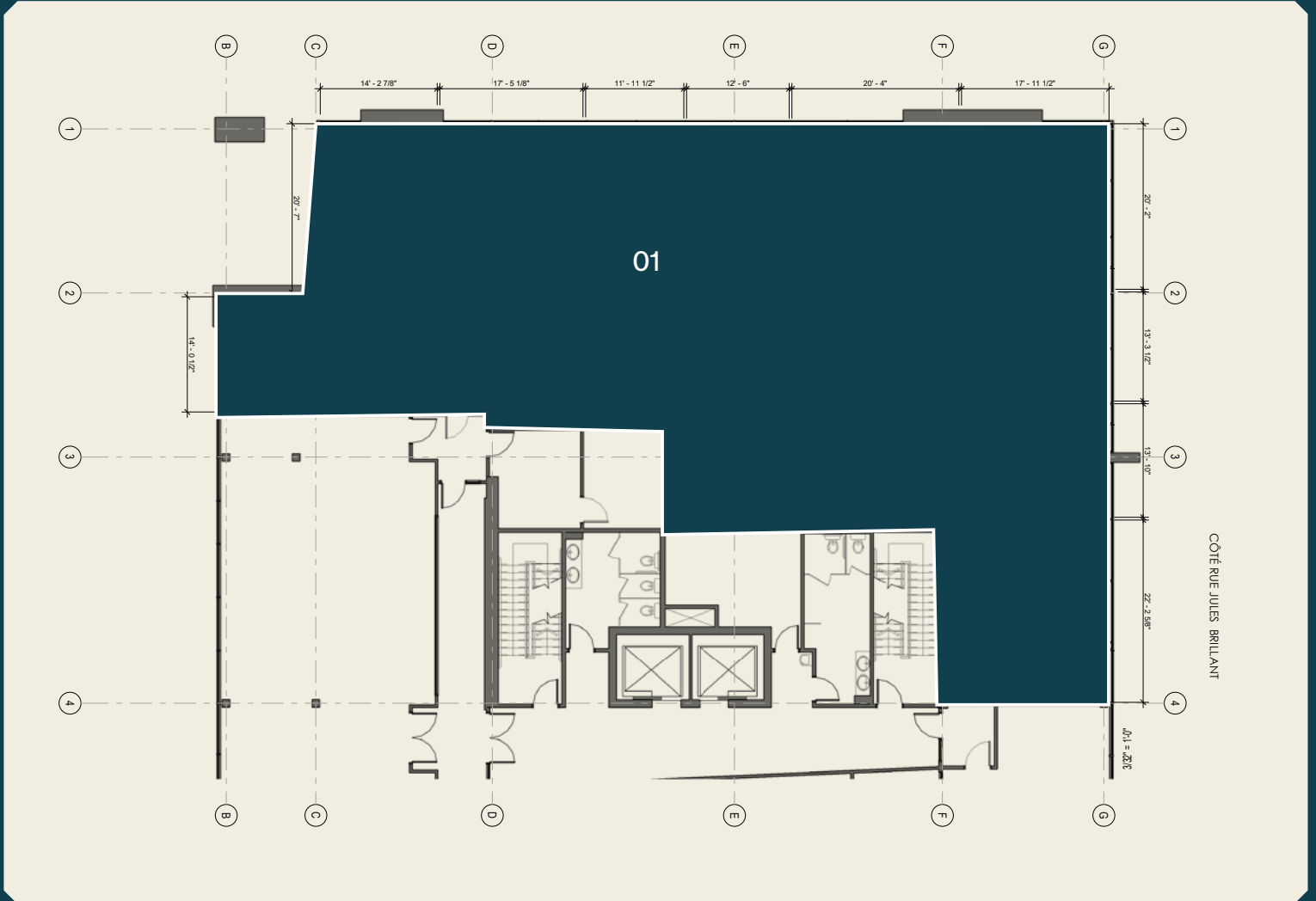
2955 Rue Jules-Brillant, Laval
Easy access to highways 15, 440
Interior & exterior parking available

Ground Floor Plan



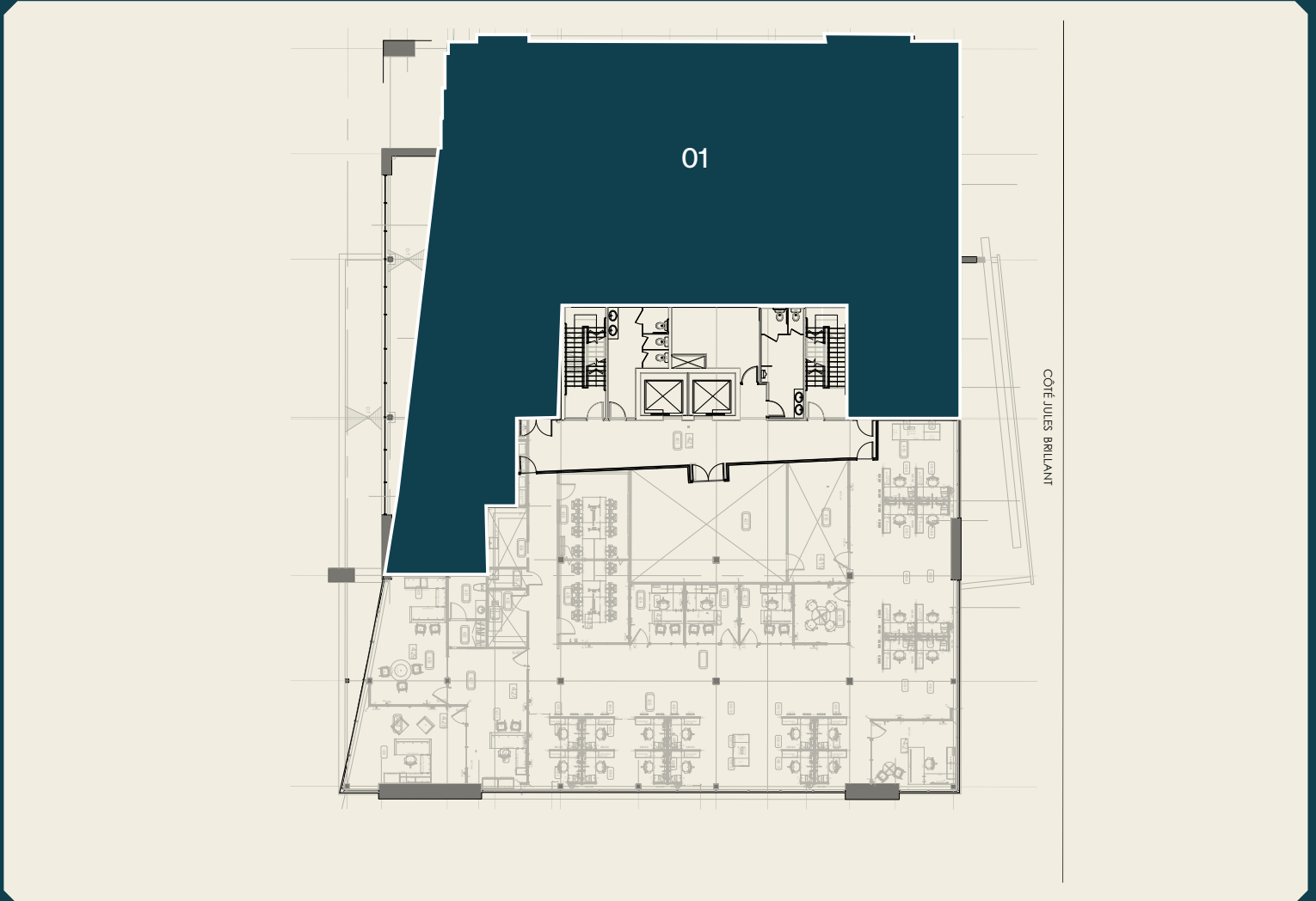
01 - 6,868 sq. ft.

3rd Floor Plan



01 - 5,782 sq. ft.

4th Floor Plan



01 - 7,576 sq. ft.

Summary



Certifications



LEED

(Leadership in Energy and Environmental Design) is a rating system recognized in 150 countries and is designed to leave a legacy of high-quality, environmentally friendly buildings with a reduced impact on the environment.

Relevant Information

- Year of construction - 2016
- Available space:
 - Ground floor - 6,868 sq. ft.
 - 3rd Floor - 5,782 sq. ft.
 - 4th Floor - 7,576 sq. ft.

MONTONI

For any questions related to this
presentation, please contact:
abouchard@groupemontoni.com