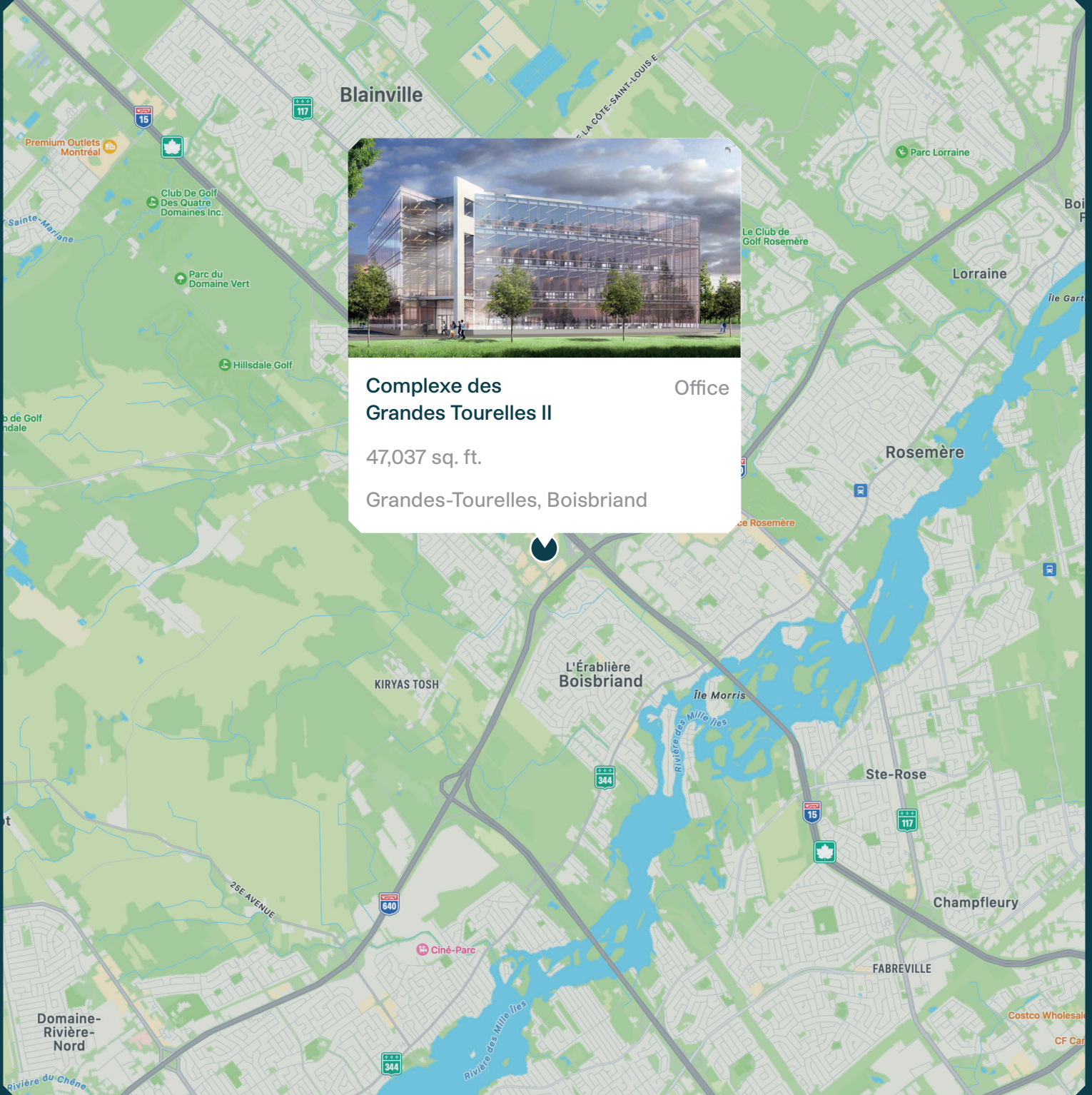


Complexe des Grandes-Tourelles II



MONTONI

Building on our word
for tomorrow

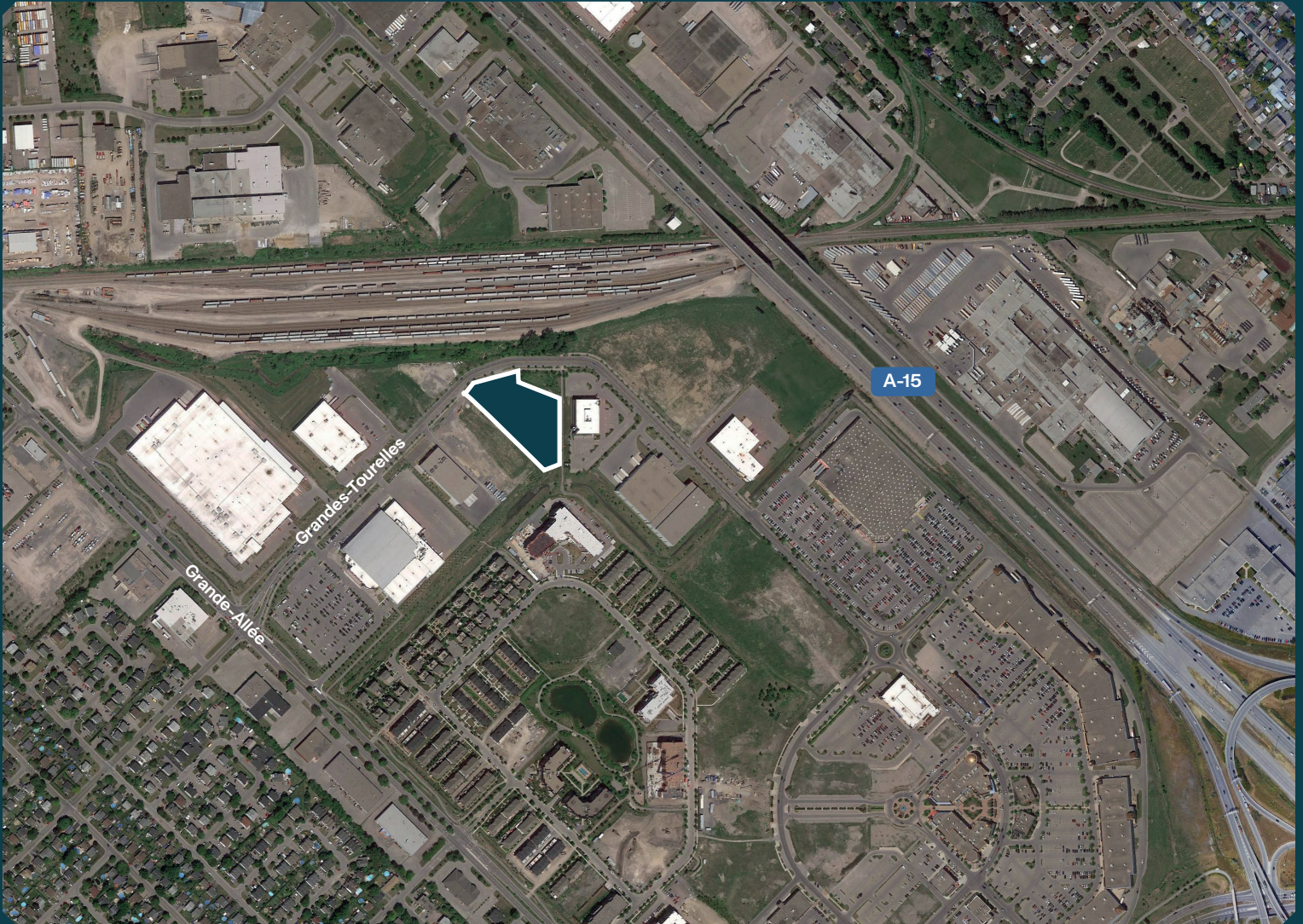


**Complexe des
Grandes-Tourelles II** Office

47,037 sq. ft.

Grandes-Tourelles, Boisbriand

Neighborhood Map



TERRAIN

Total area : 120,846 sq. ft.

BÂTIMENT

Available Space : 47,037 sq. ft.

ACCÈS

3700, av. des Grandes-Tourelles, Boisbriand
Interior & exterior parking
Easy access to Highway 15, 640
Bus 51, 52, 59

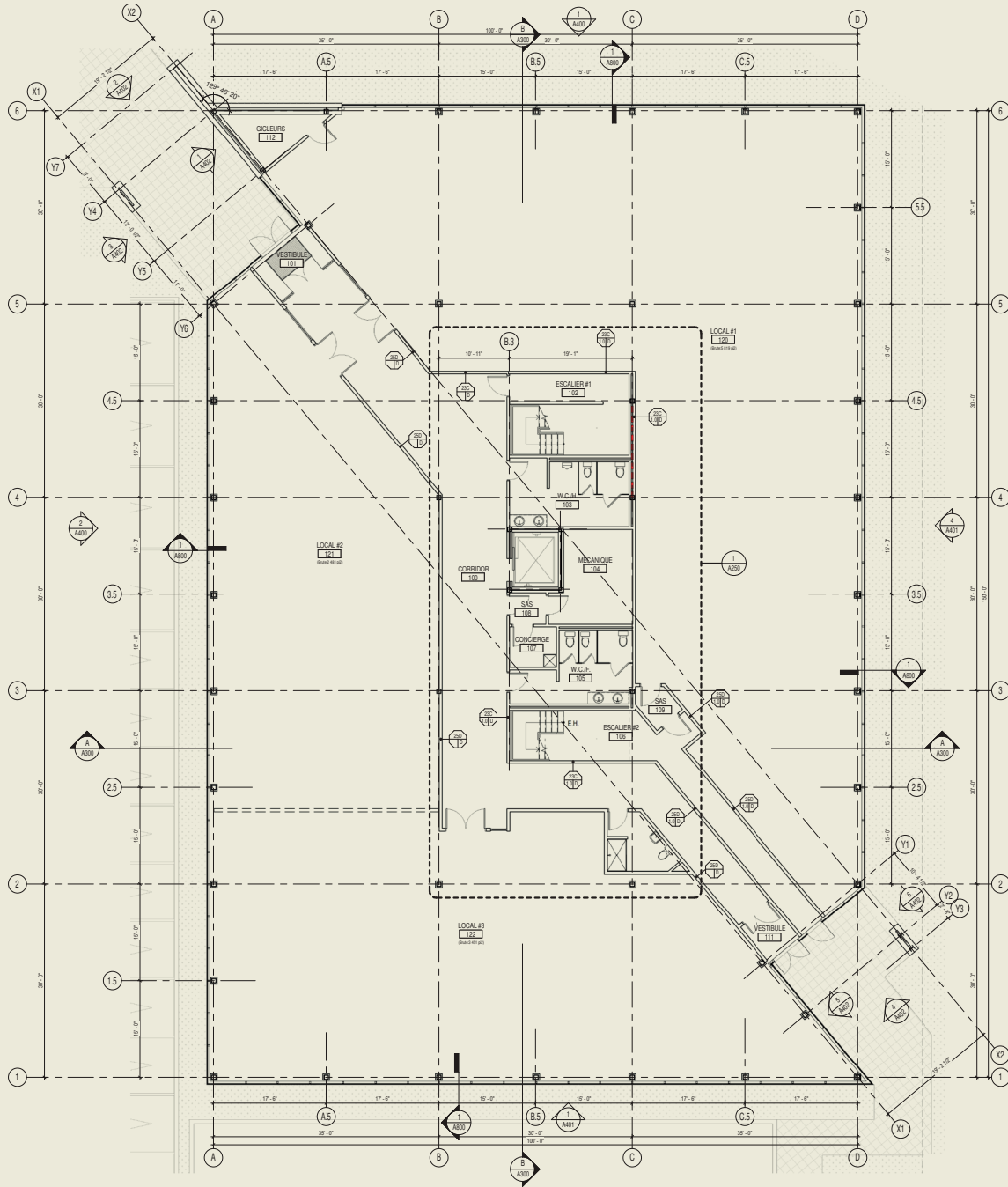
FINANCEMENT

Rental rates : 20 \$/sq.ft.
Operating costs : 10,25 \$/sq.ft.
Leasehold improvements : 35 \$/sq.ft.
Public utilities : Metered

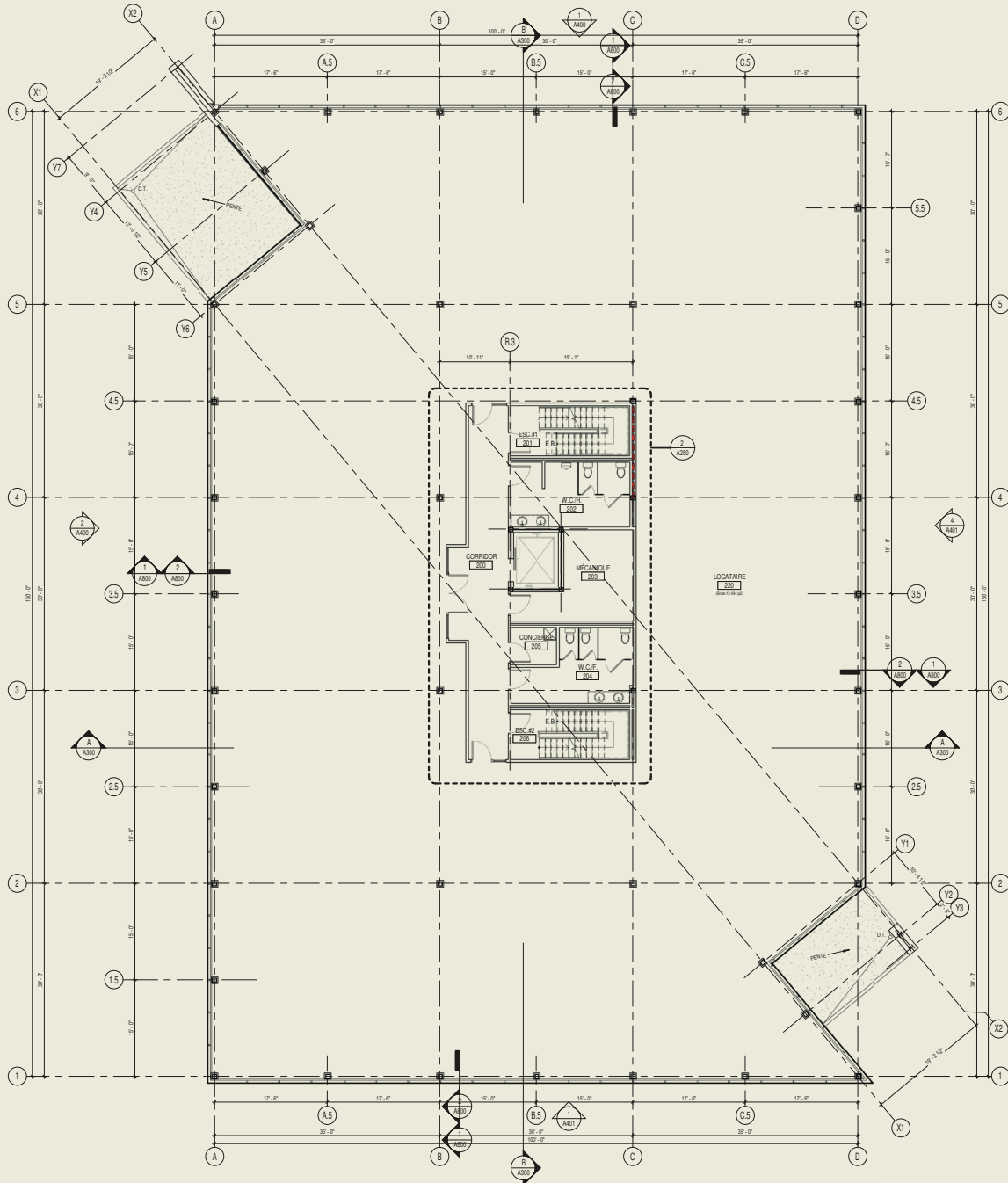
Perspectives



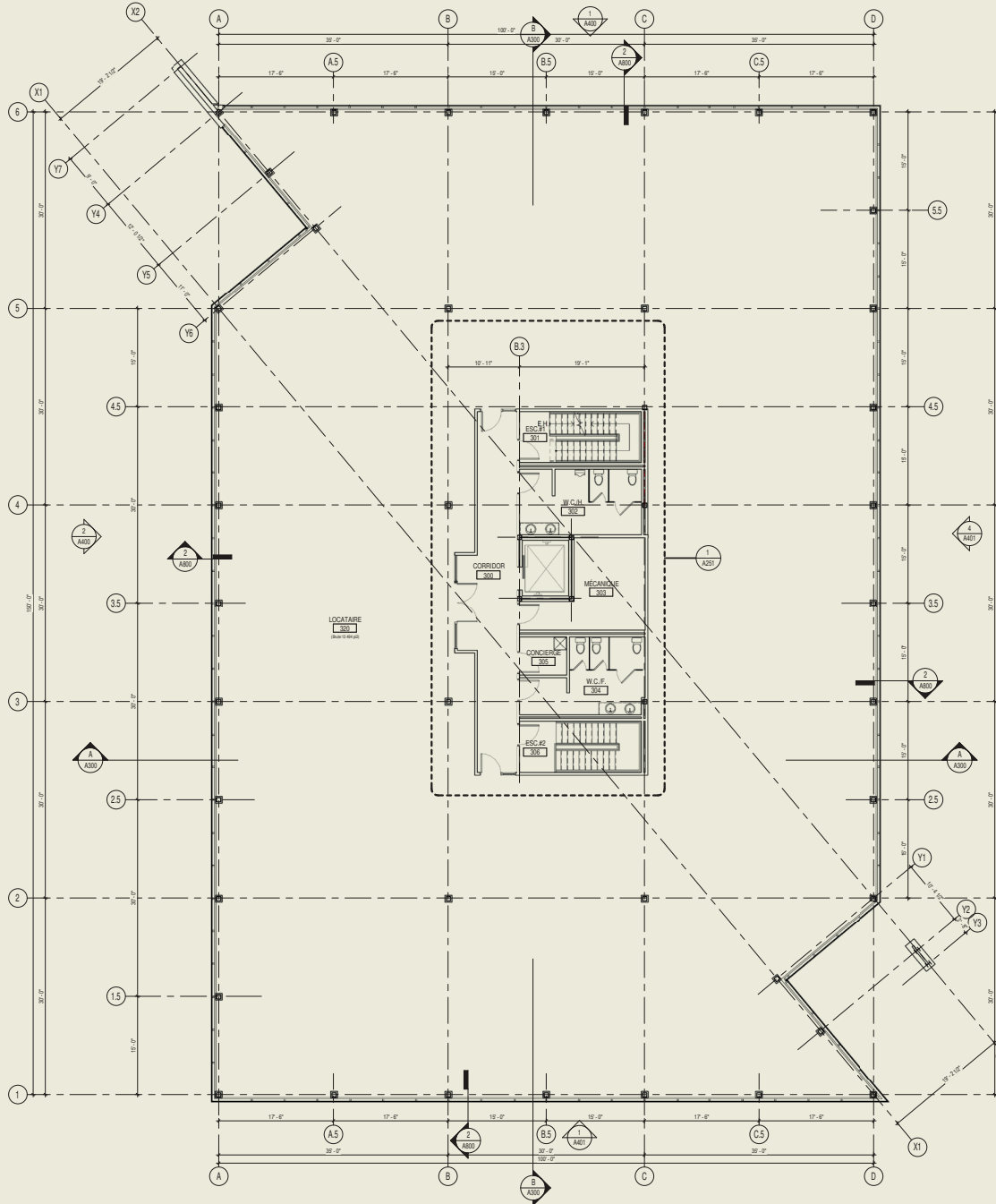
Ground floor plan



2nd floor plan



3rd floor plan



Summary



Certifications aimed

Relevant Information



LEED

(Leadership in Energy and Environmental Design) is a rating system recognized in 150 countries and is designed to leave a legacy of high-quality, environmentally friendly buildings with a reduced impact on the environment.

- Total area : 120,846 sq. ft.
- Total building area : 47,037 sq. ft.
- Available space : 47,037 sq. ft.

MONTONI

For any questions related to this
presentation, please contact:
abouchard@groupemontoni.com