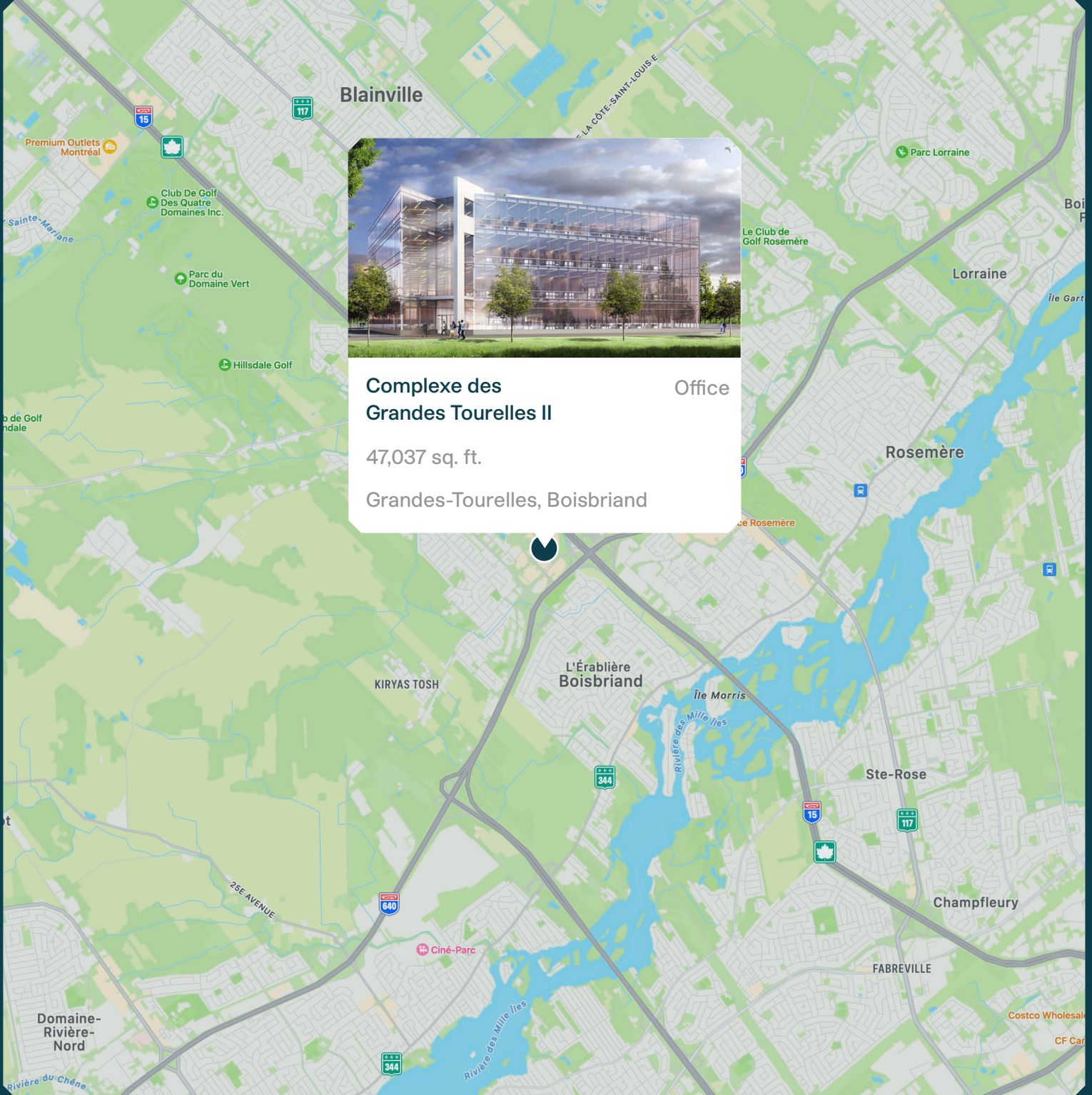


Complexe des Grandes-Tourelles II



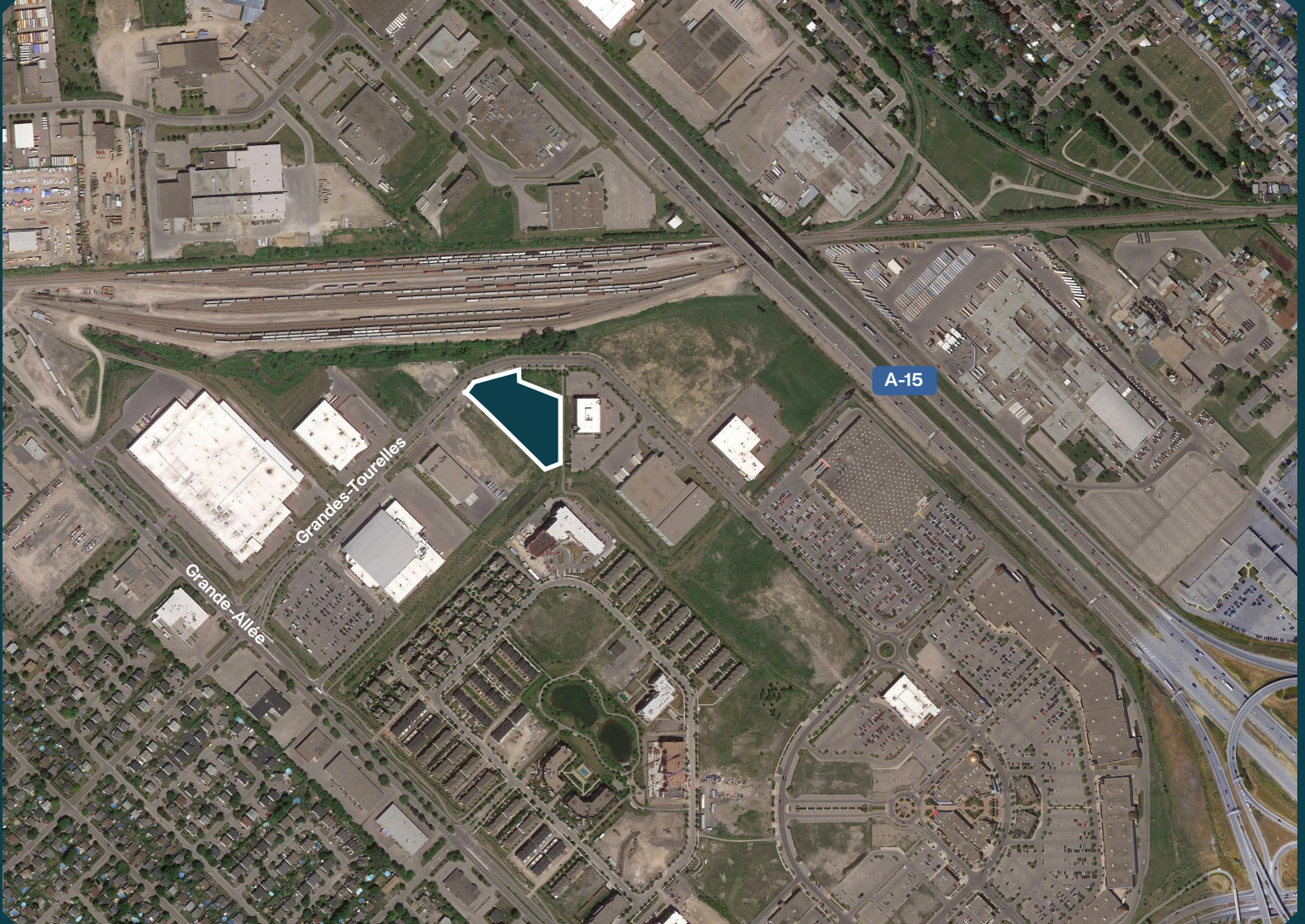
MONTONI

Building on our word
for tomorrow



**Complexe des
Grandes-Tourelles II** Office
47,037 sq. ft.
Grandes-Tourelles, Boisbriand

Neighborhood Map



LAND

Total area : 120,846 sq. ft.

BUILDING

Available Space : 47,037 sq. ft.

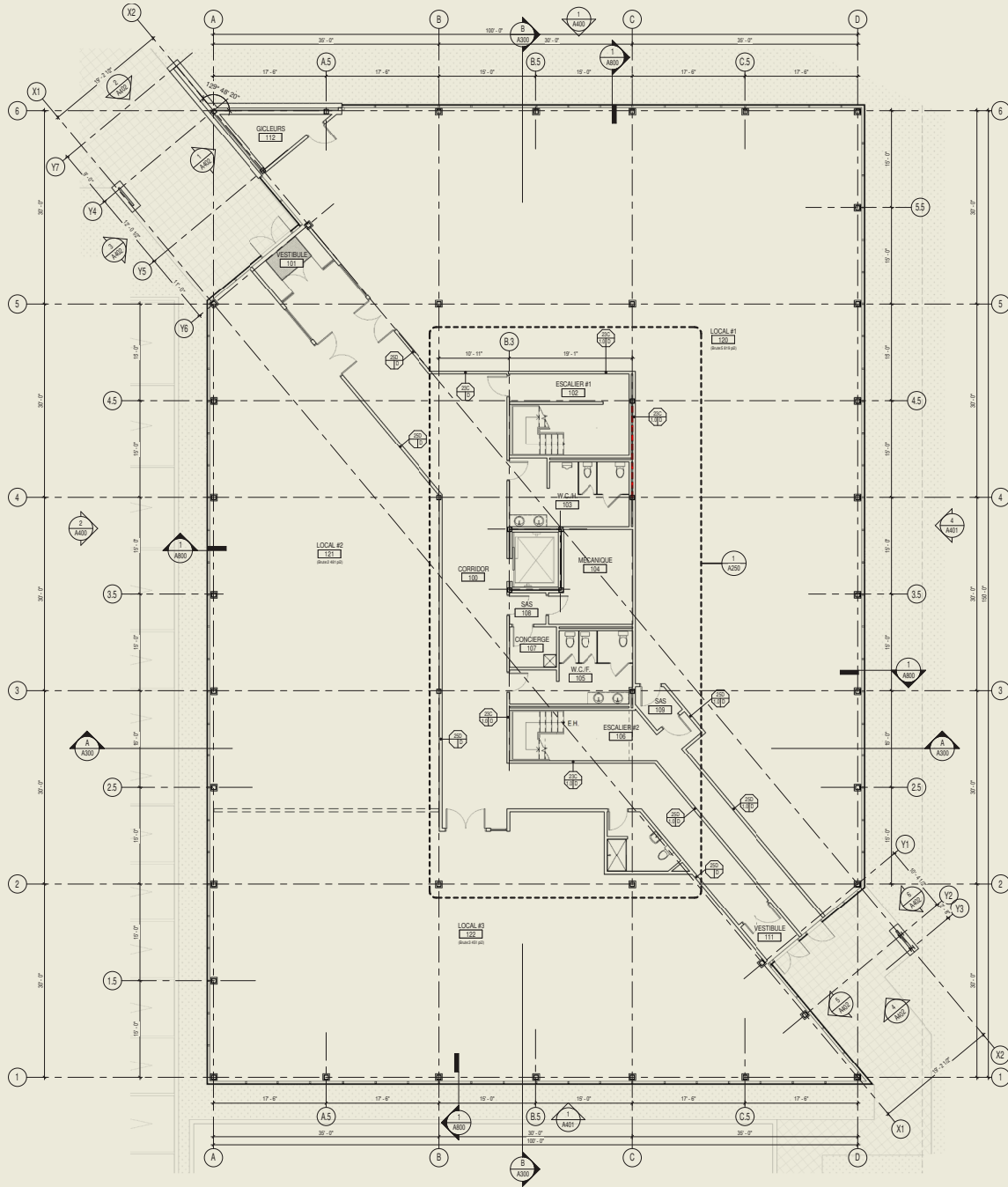
ACCES

3700, av. des Grandes-Tourelles, Boisbriand
Interior & exterior parking
Easy access to Highway 15, 640
Bus 51, 52, 59

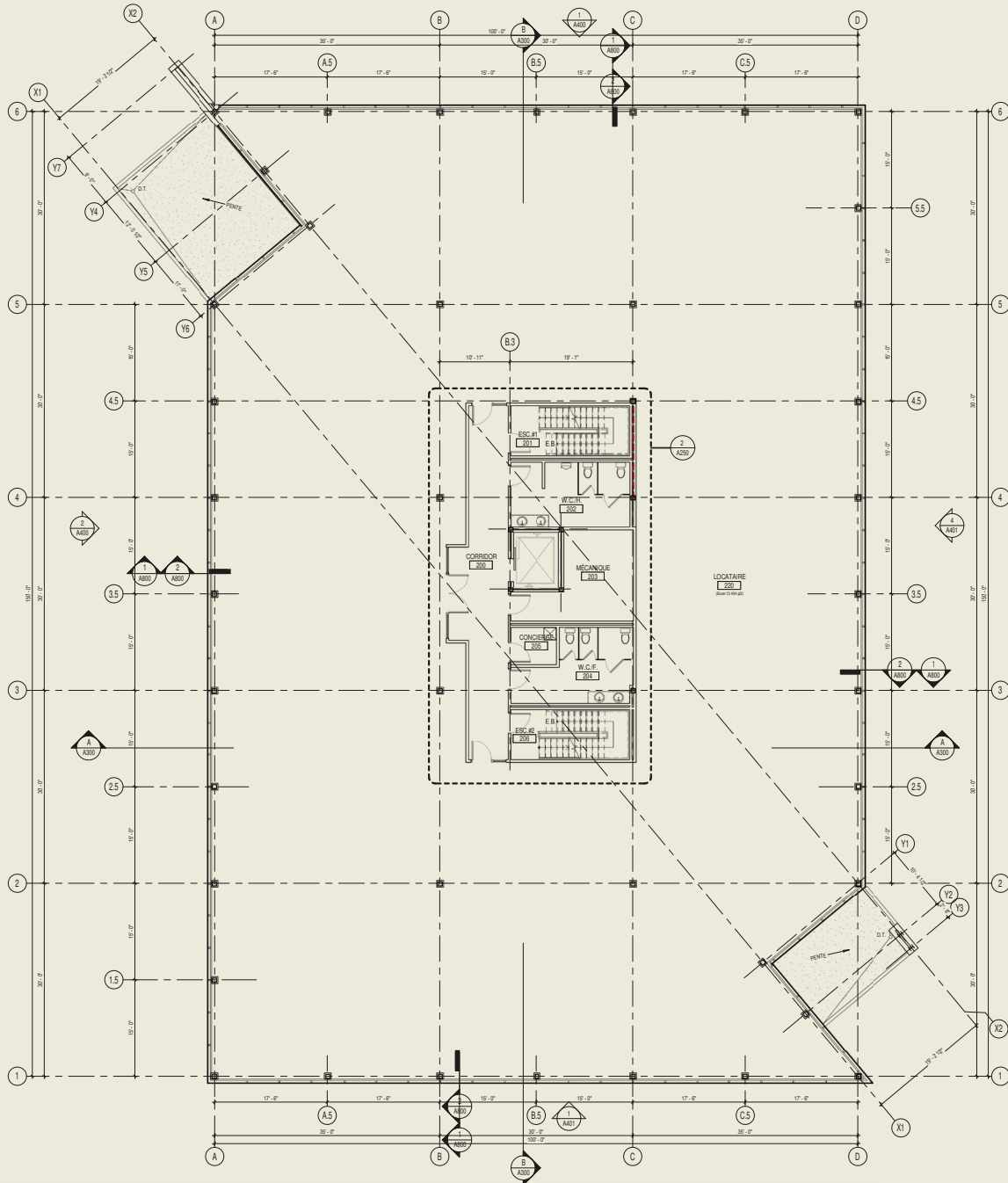
Perspectives



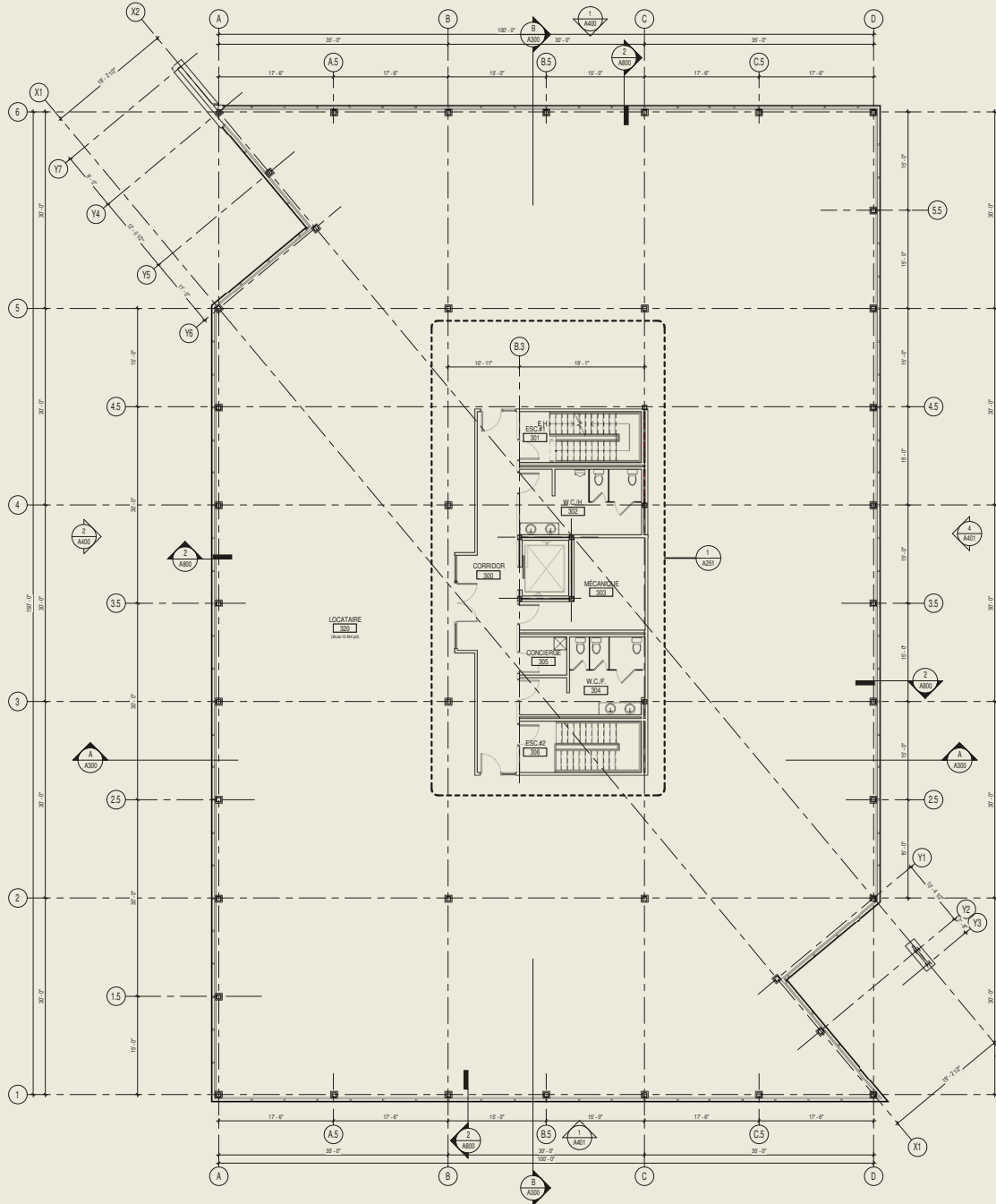
Ground floor plan



2nd floor plan



3rd floor plan



Summary



Certifications aimed

Relevant Information



LEED

(Leadership in Energy and Environmental Design) is a rating system recognized in 150 countries and is designed to leave a legacy of high-quality, environmentally friendly buildings with a reduced impact on the environment.

- Total area : 120,846 sq. ft.
- Total building area : 47,037 sq. ft.
- Available space : 47,037 sq. ft.

MONTONI

For any questions related to this
presentation, please contact:
abouchard@groupemontoni.com