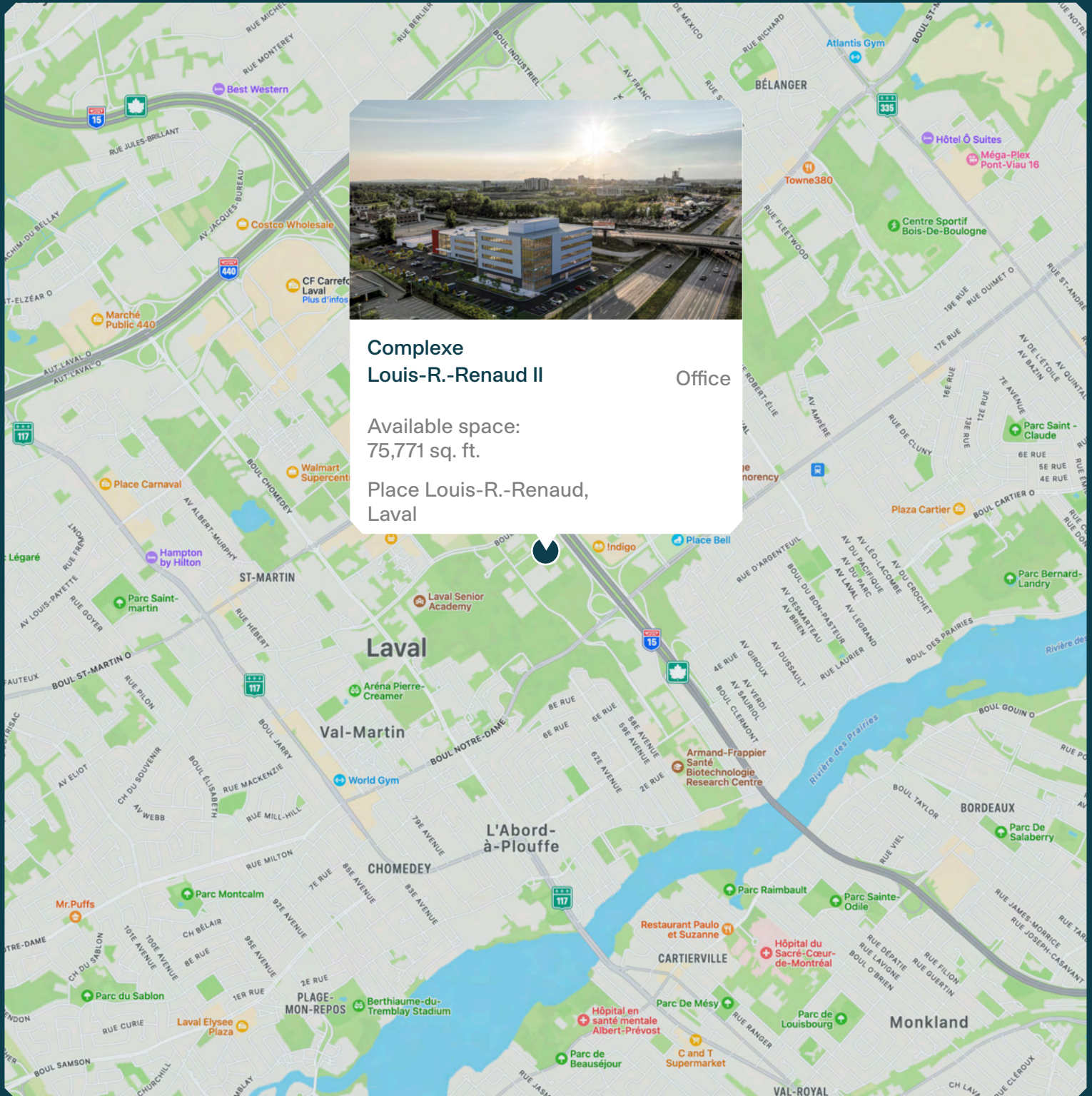


Complexe Louis-R.-Renaud II



MONTONI

Building on our word
for tomorrow



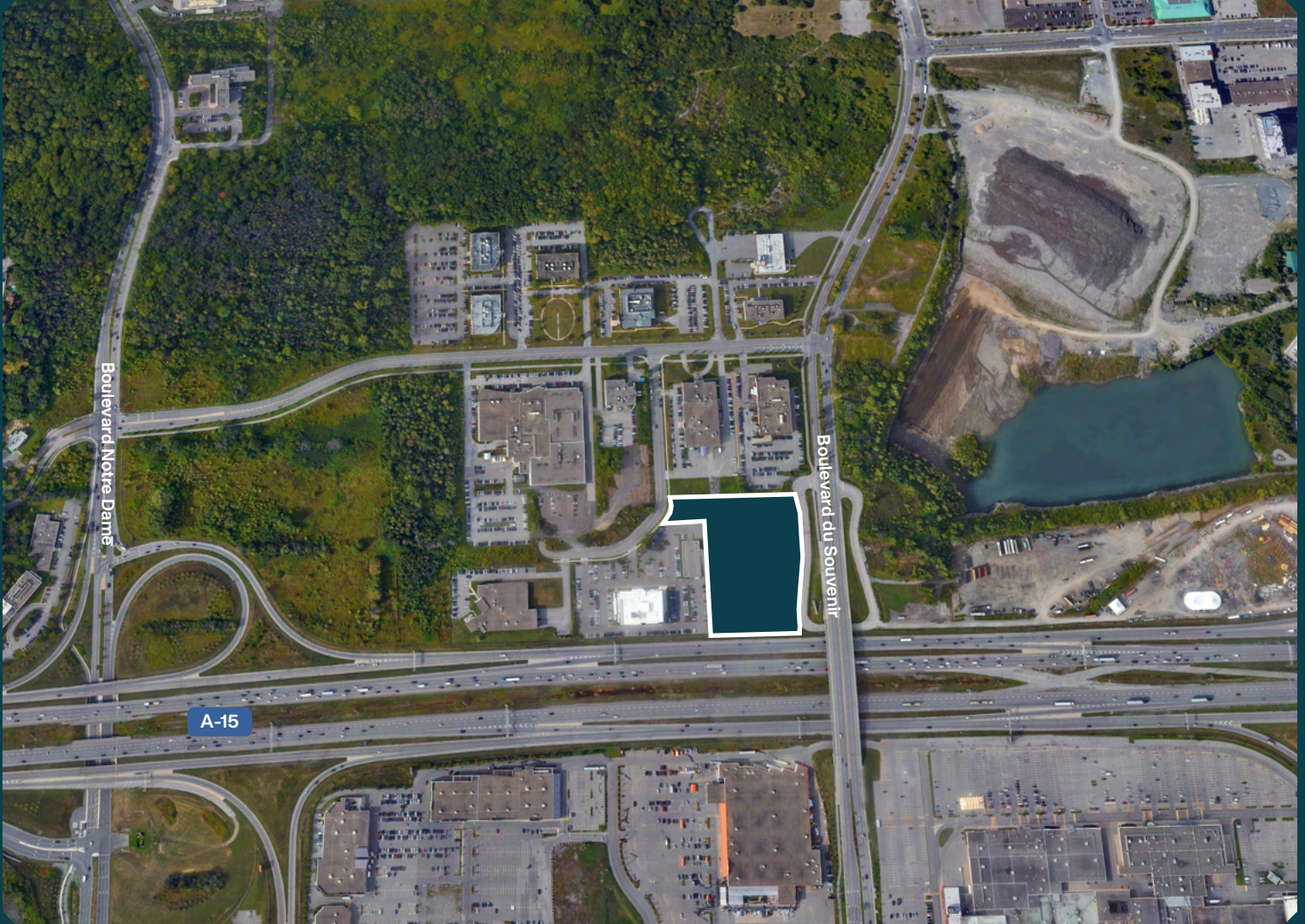
**Complexe
Louis-R.-Renaud II**

Office

Available space:
75,771 sq. ft.

Place Louis-R.-Renaud,
Laval

Neighbourhood Map



BUILDING

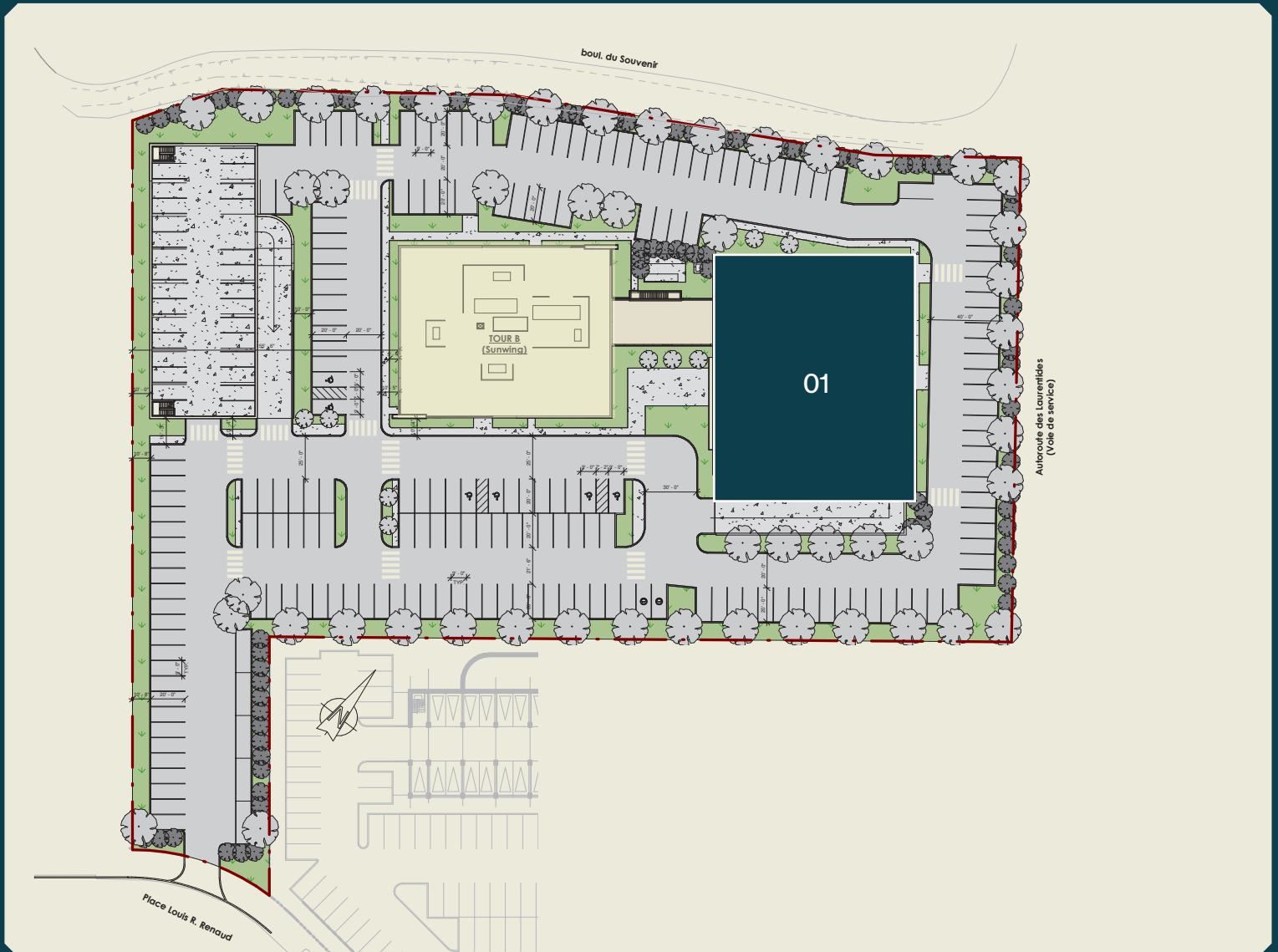
Total available space - 75,771 sq. ft.

Ground floor - 15,451 sq. ft.
2nd floor - 15,080 sq. ft.
3rd floor - 15,080 sq. ft.
4th floor - 15,080 sq. ft.
5th floor - 15,080 sq. ft.

ACCESS

Place Louis-R.-Renaud, Laval
Easy access to highways 15, 440

Site Plan

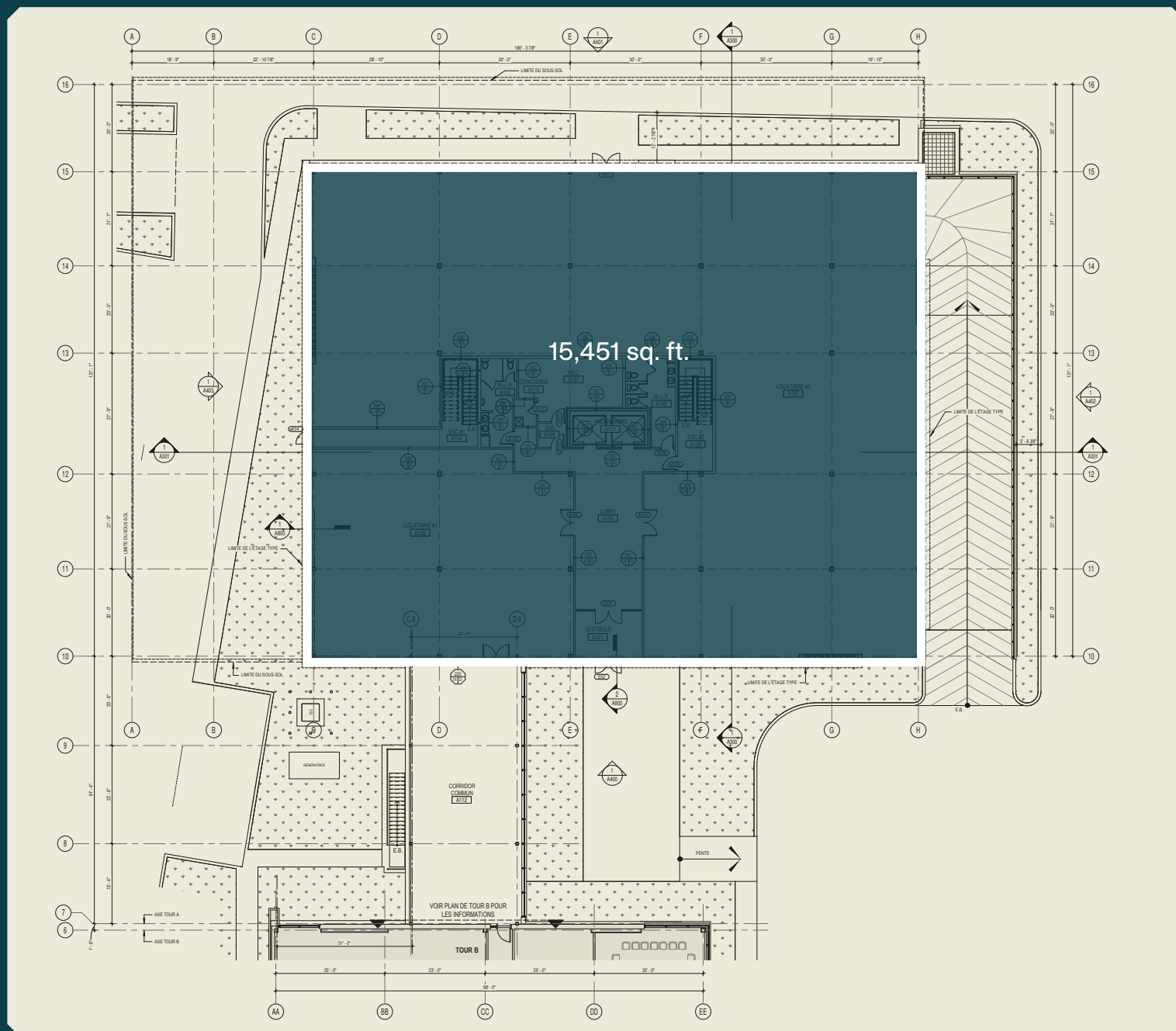


01 - Louis-R.-Renaud II

Ground Floor Plan



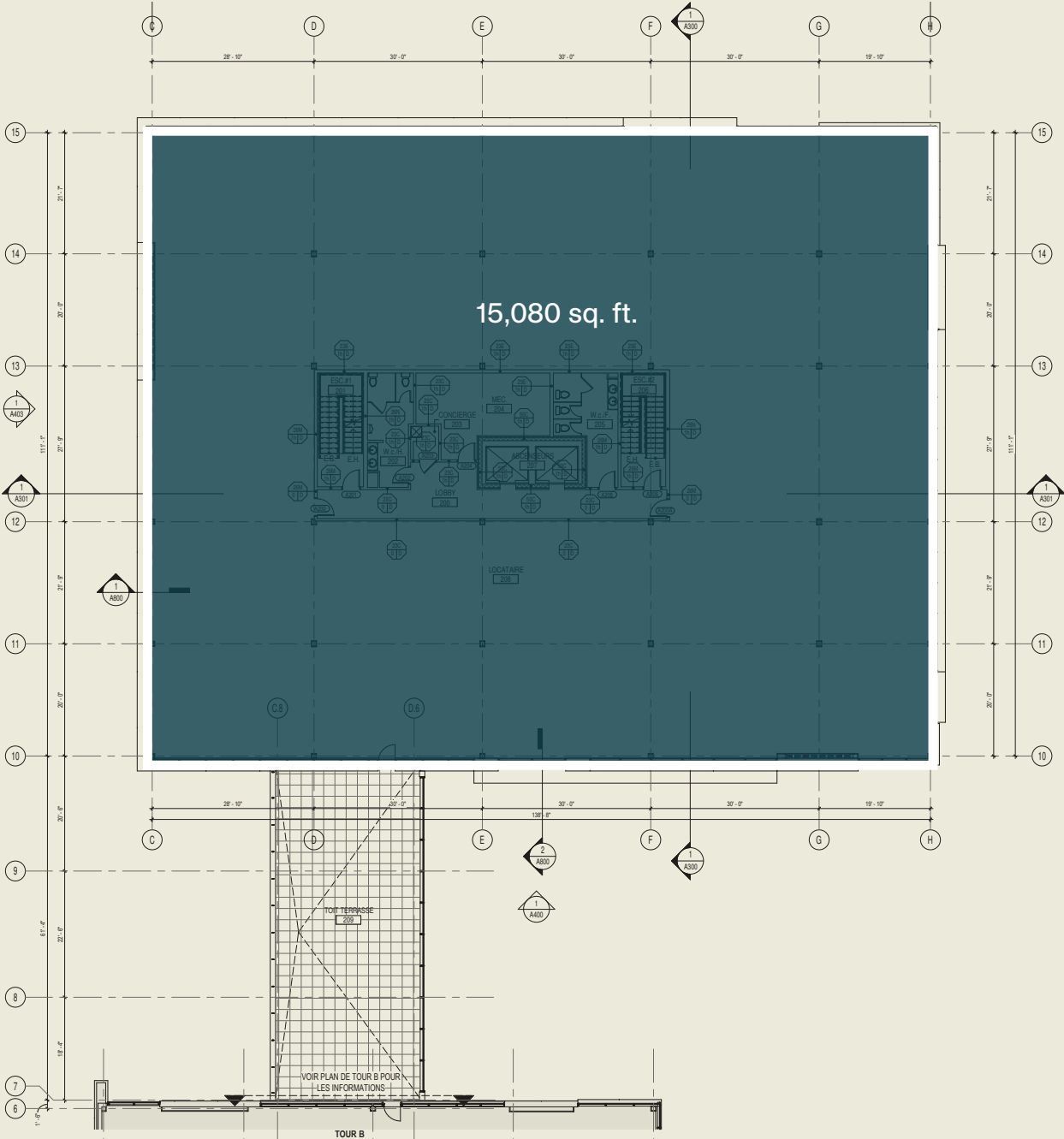
Ground Floor Plan



2nd Floor Plan



2nd Floor Plan



3rd to 5th Floor Plan



15,080 sq. ft.

Architectural floor plan showing building layout, parking spaces, and dimensions. The plan includes a central building footprint with internal rooms and a large surrounding parking area. Dimensions are provided for the building footprint and the overall site area. A north arrow is located in the upper right corner.

Summary



Projected Certifications

Relevant Information



LEED

(Leadership in Energy and Environmental Design) is a rating system recognized in 150 countries and is designed to leave a legacy of high-quality, environmentally friendly buildings with a reduced impact on the environment.

- Year of construction - 2025
- Available - Q2 2026
- Available space:
 - Ground floor - 15,451 sq. ft.
 - 2nd floor - 15,080 sq. ft.
 - 3rd floor - 15,080 sq. ft.
 - 4th floor - 15,080 sq. ft.
 - 5th floor - 15,080 sq. ft.
 - Total available space - 75,771 sq. ft.

MONTONI

For any questions related to this
presentation, please contact:
abouchard@groupeмонтони.com