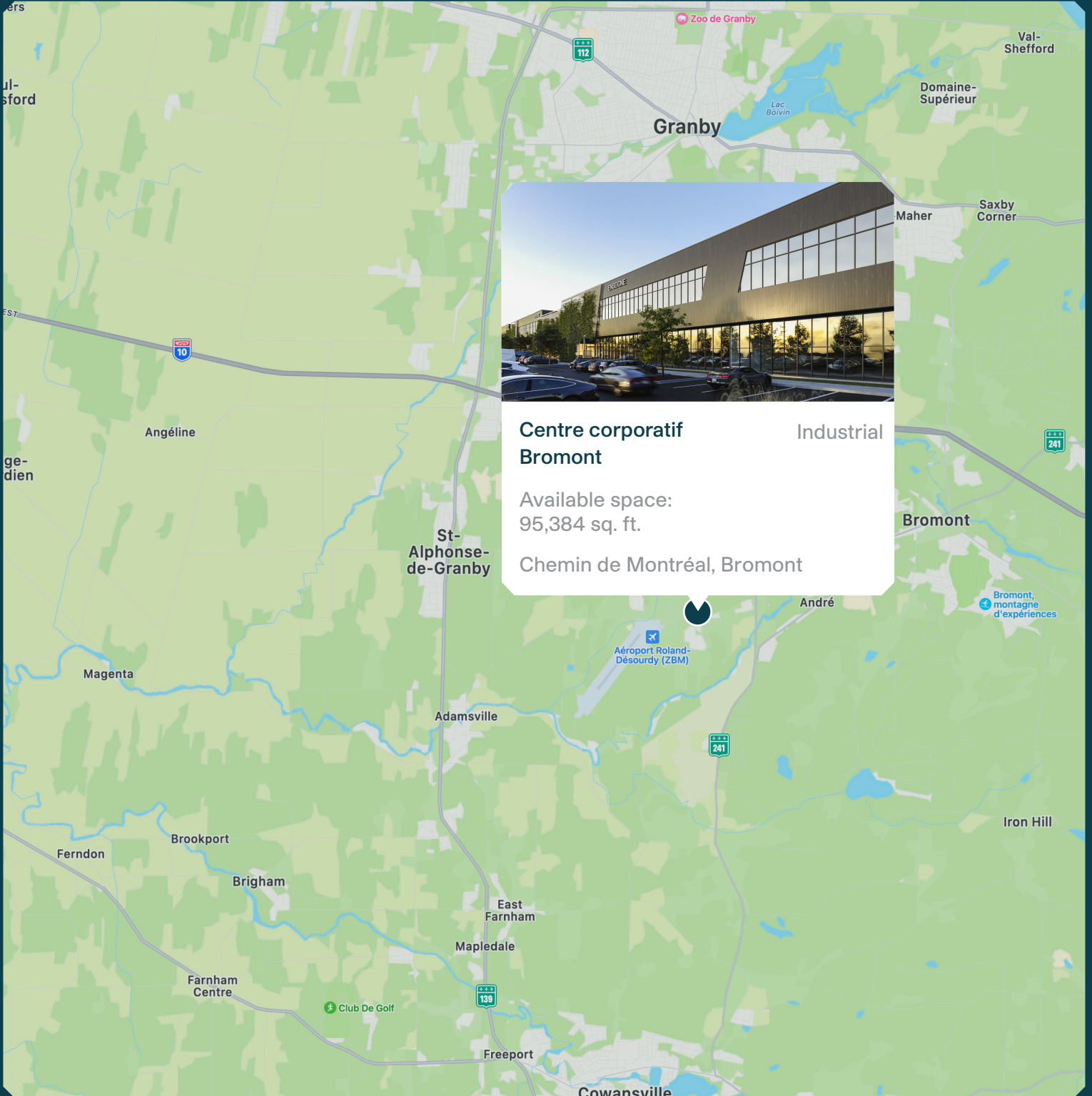


Centre corporatif Bromont



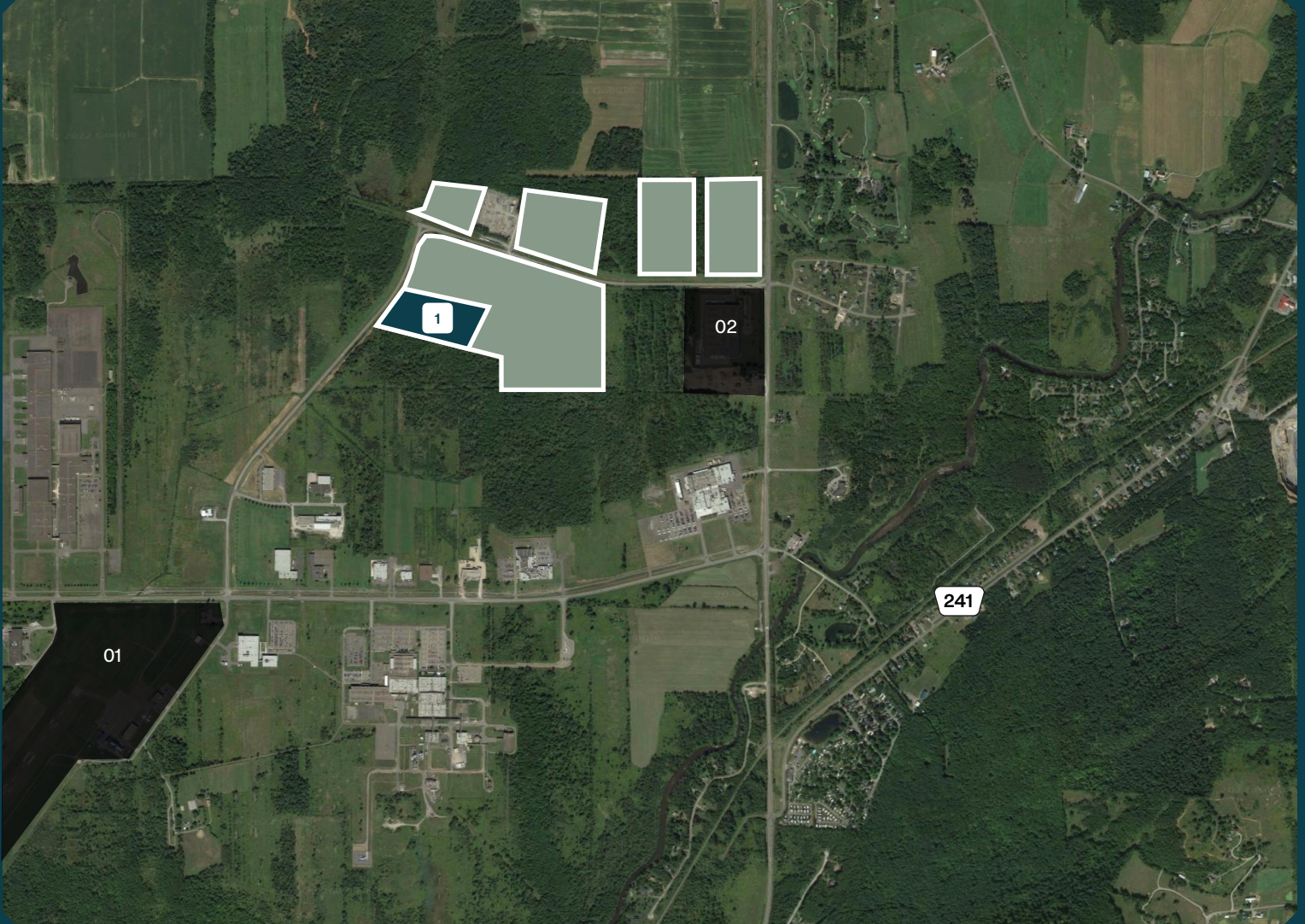


Centre corporatif Bromont Industrial

Available space:
95,384 sq. ft.

Chemin de Montréal, Bromont

Neighbourhood Map



LAND

Total area - 10,000,000 sq. ft.

01 - Airport Roland-Désourdy

02 - ABB

BUILDING

1 Phase 1
Available space - 95,384 sq. ft.

ACCESS

Chemin de Montréal, Bromont
Easy access to highways 10, 241

Site Plan - Phase 1



AVAILABLE SPACE

- 1** Building 1 - 49,262 sq. ft.
- 2** Building 2 - 46,122 sq. ft.

Summary



Projected Certifications



LEED

(Leadership in Energy and Environmental Design) is a rating system recognized in 150 countries and is designed to leave a legacy of high-quality, environmentally friendly buildings with a reduced impact on the environment.

Relevant Information

- Start of construction - Q2 2025
- Available - Q1 2026
- Total land area - 10,000,000 sq. ft.
- Available space:

Phase 1

Building 1 - 49,262 sq. ft.
Building 2 - 46,122 sq. ft.

MONTONI

For any questions related to this
presentation, please contact:
abouchard@groupemontoni.com