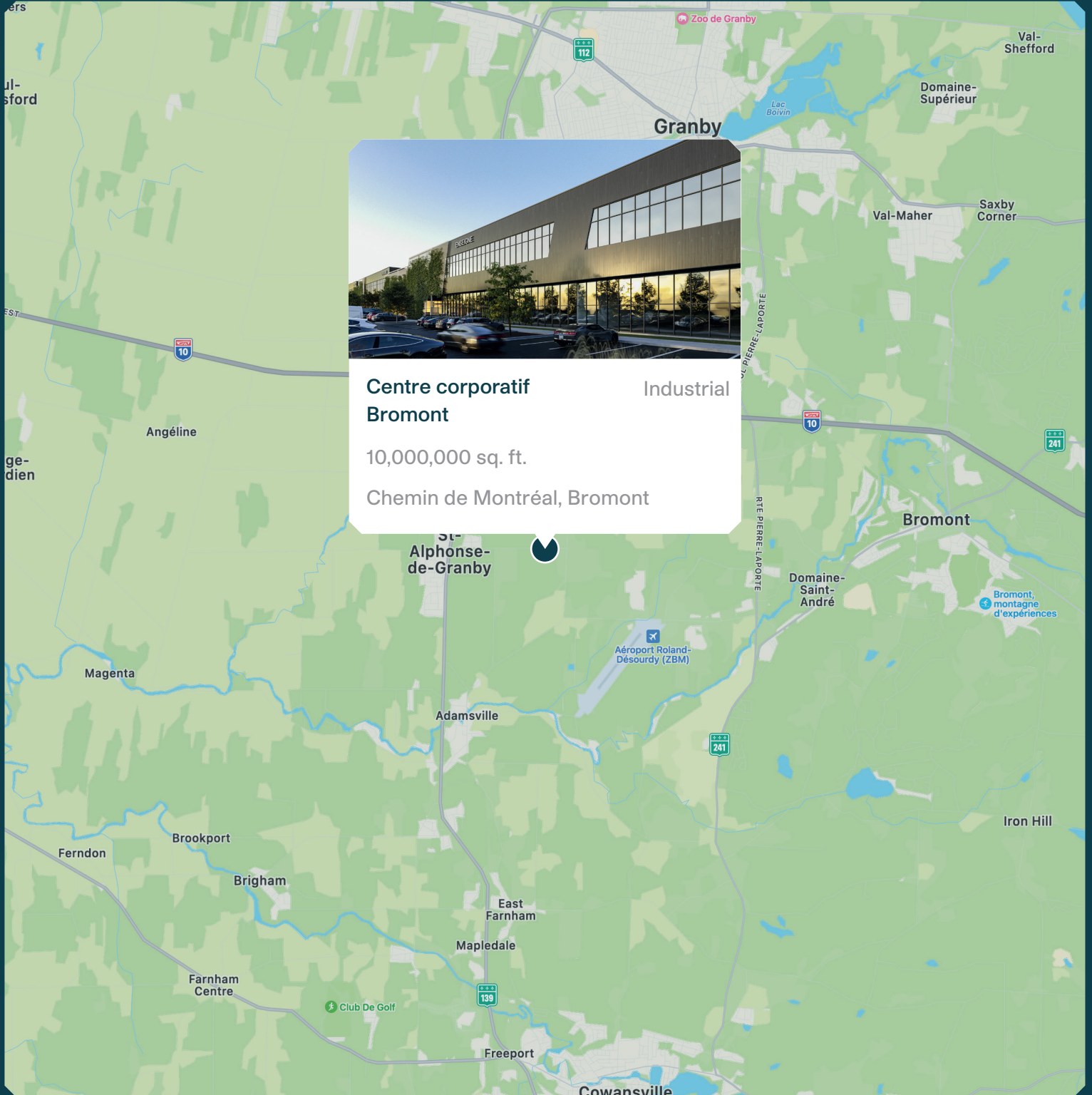
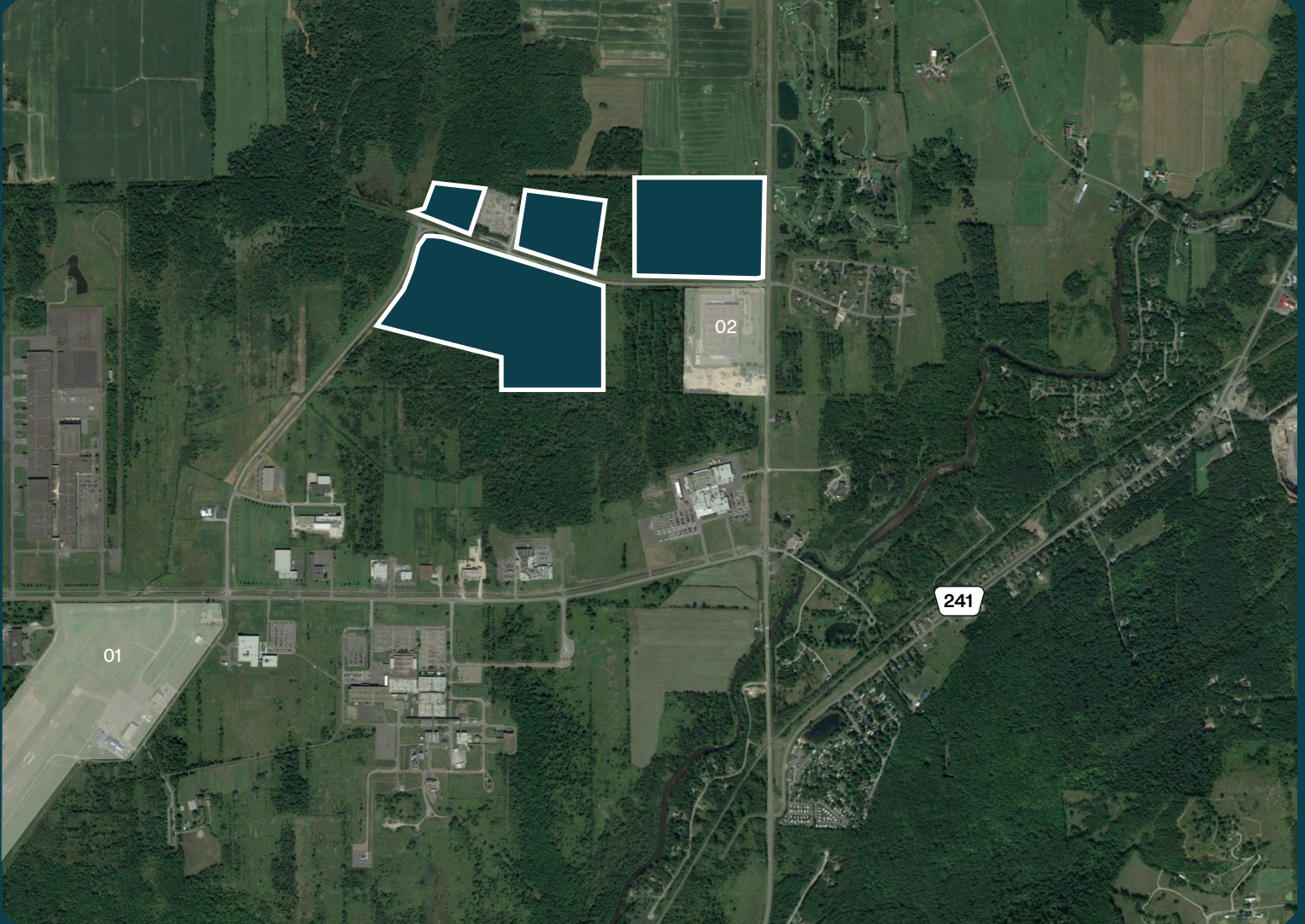


Centre corporatif Bromont





Neighborhood Map



LAND

Total area - 10,000,000 sq. ft.

BUILDINGS - AVAILABLE SPACES

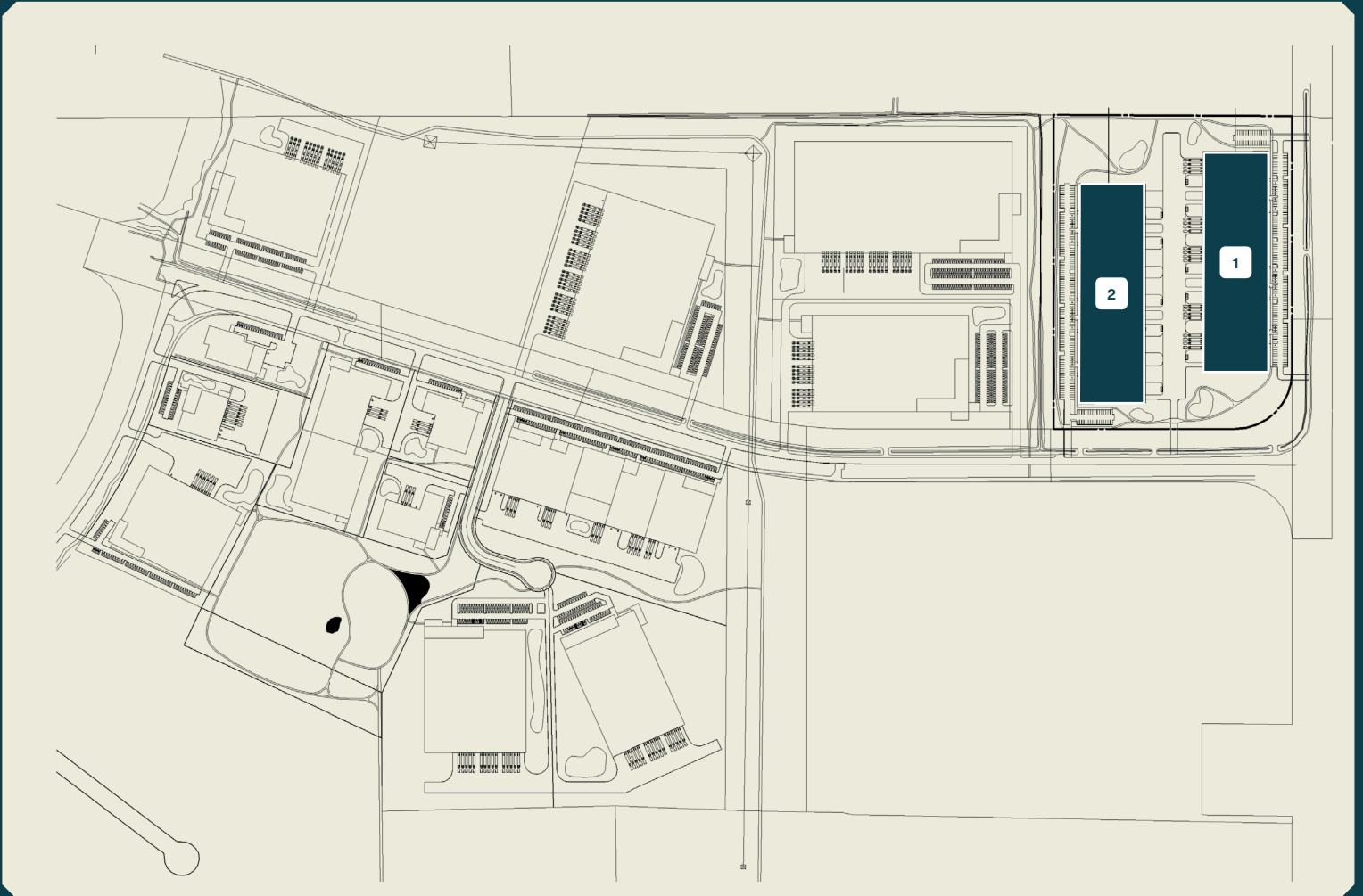
- 1** Phase 1 217,967 sq. ft.
- 2** Phase 2 217,967 sq. ft.

ACCESS

Chemin de Montréal, Bromont
Easy access to highway 241

01 - Airport 02 - ABB

Phase 1 & 2 site plan



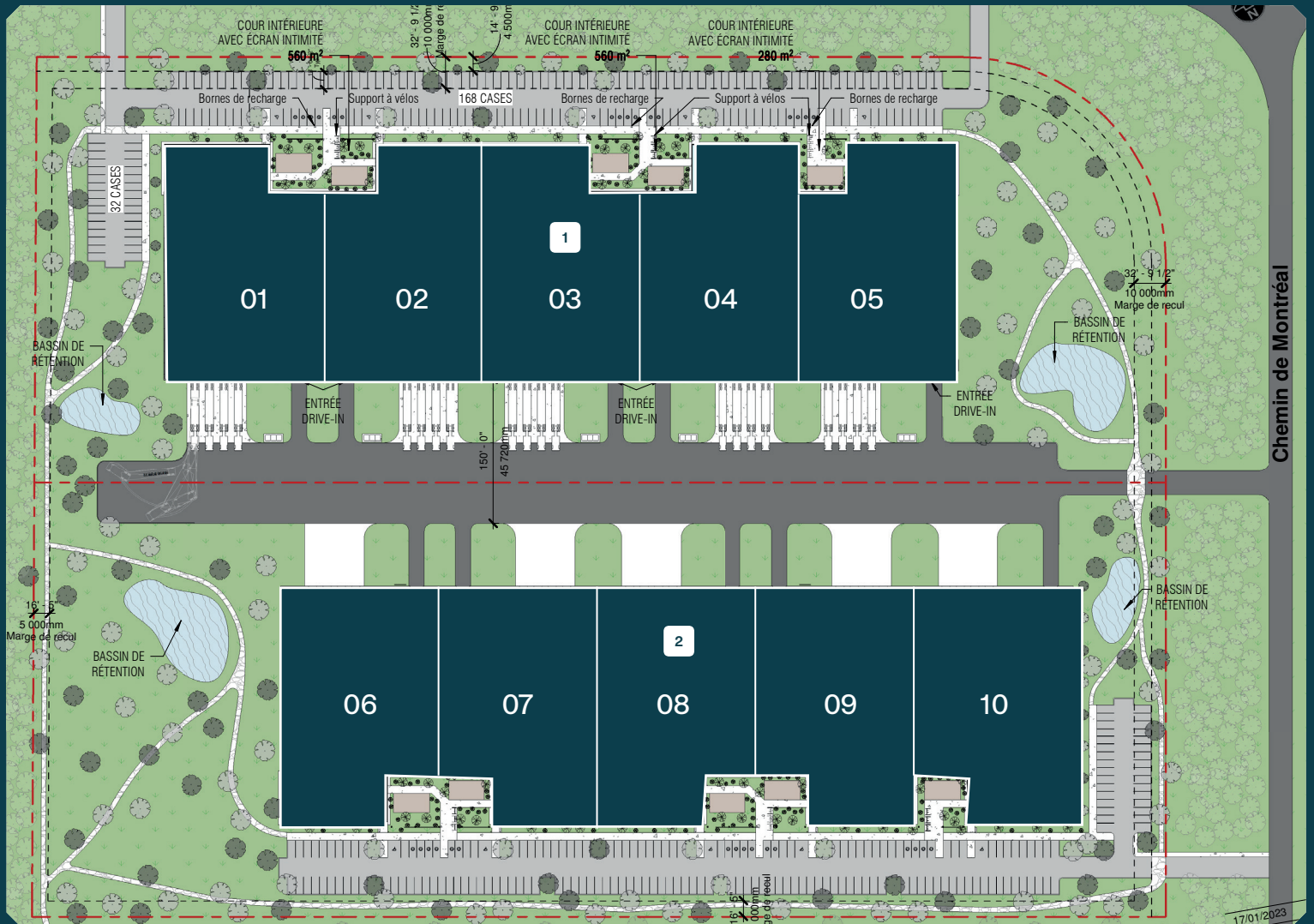
BUILDINGS - AVAILABLE SPACES

- 1** Phase 1 217,967 sq. ft.
- 2** Phase 2 217,967 sq. ft.

Phase 1 & 2 Ground floor plan

1 PHASE 1

01	02	03	04	05
43,701 sq. ft.	43,432 sq. ft.	43,432 sq. ft.	43,701 sq. ft.	43,701 sq. ft.



2 PHASE 2

06	07	08	09	10
43,701 sq. ft.	43,432 sq. ft.	43,432 sq. ft.	43,701 sq. ft.	43,701 sq. ft.

Perspectives



Summary



Certifications aimed



LEED

(Leadership in Energy and Environmental Design) is a rating system recognized in 150 countries and is designed to leave a legacy of high-quality, environmentally friendly buildings with a reduced impact on the environment.

Relevant Information

- Total area: 10,000,000 sq. ft.
- Available space - Phase 1: 217,967 sq. ft.
- Available space - Phase 2: 217,967 sq. ft.

MONTONI

For any questions related to this
presentation, please contact:
abouchard@groupemontoni.com