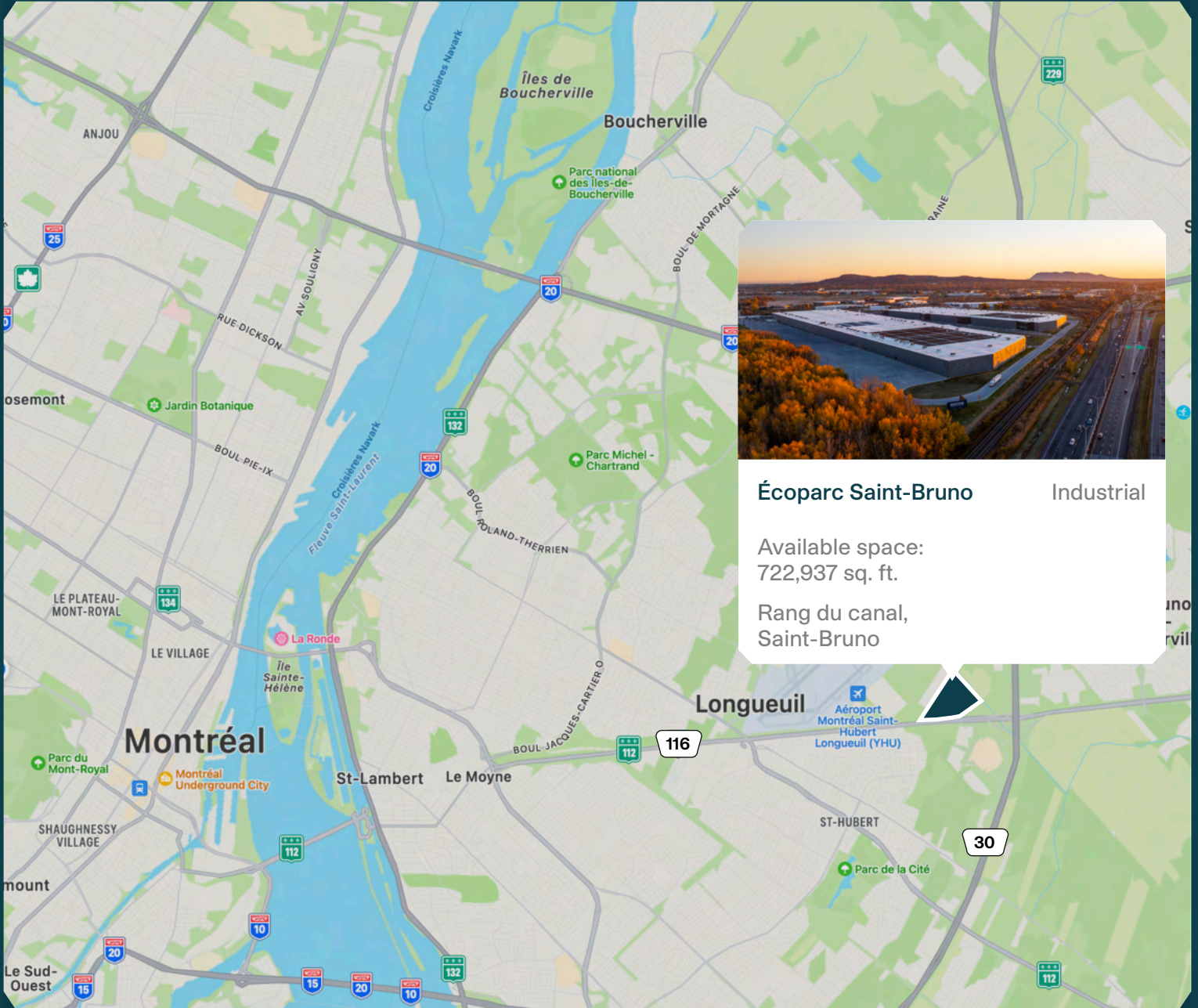


# Écoparc Saint-Bruno



**MONTONI**

Building on our word  
for tomorrow



# Neighbourhood Map



## LAND

Total area - 4,275,386 sq. ft.

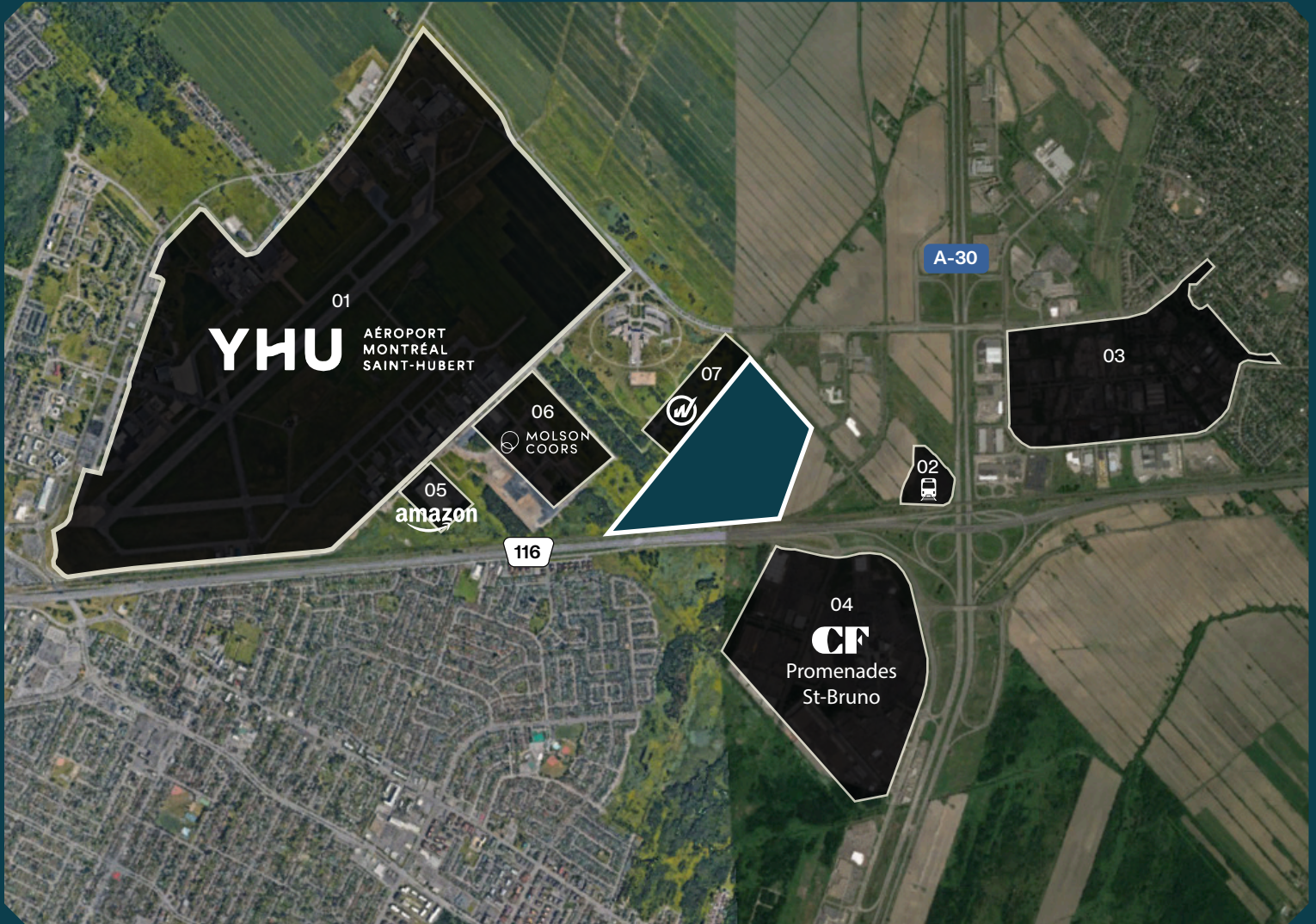
## AVAILABLE SPACE

- A** BUILDING A 233,136 sq. ft.
- B** BUILDING B 489,801 sq. ft.

## ACCESS

Rang du canal, Saint-Bruno  
Easy access to highway 116, 30

# Neighbourhood Map



## NEIGHBOURHOOD

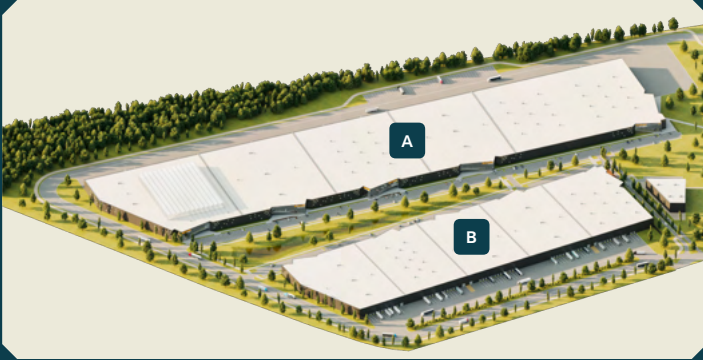
- 01 St-Hubert Airport
- 02 Train station
- 03 Business park
- 04 Promenades Saint-Bruno
- 05 Amazon
- 06 Molson Coors
- 07 Wiptec

# Neighbourhood Map



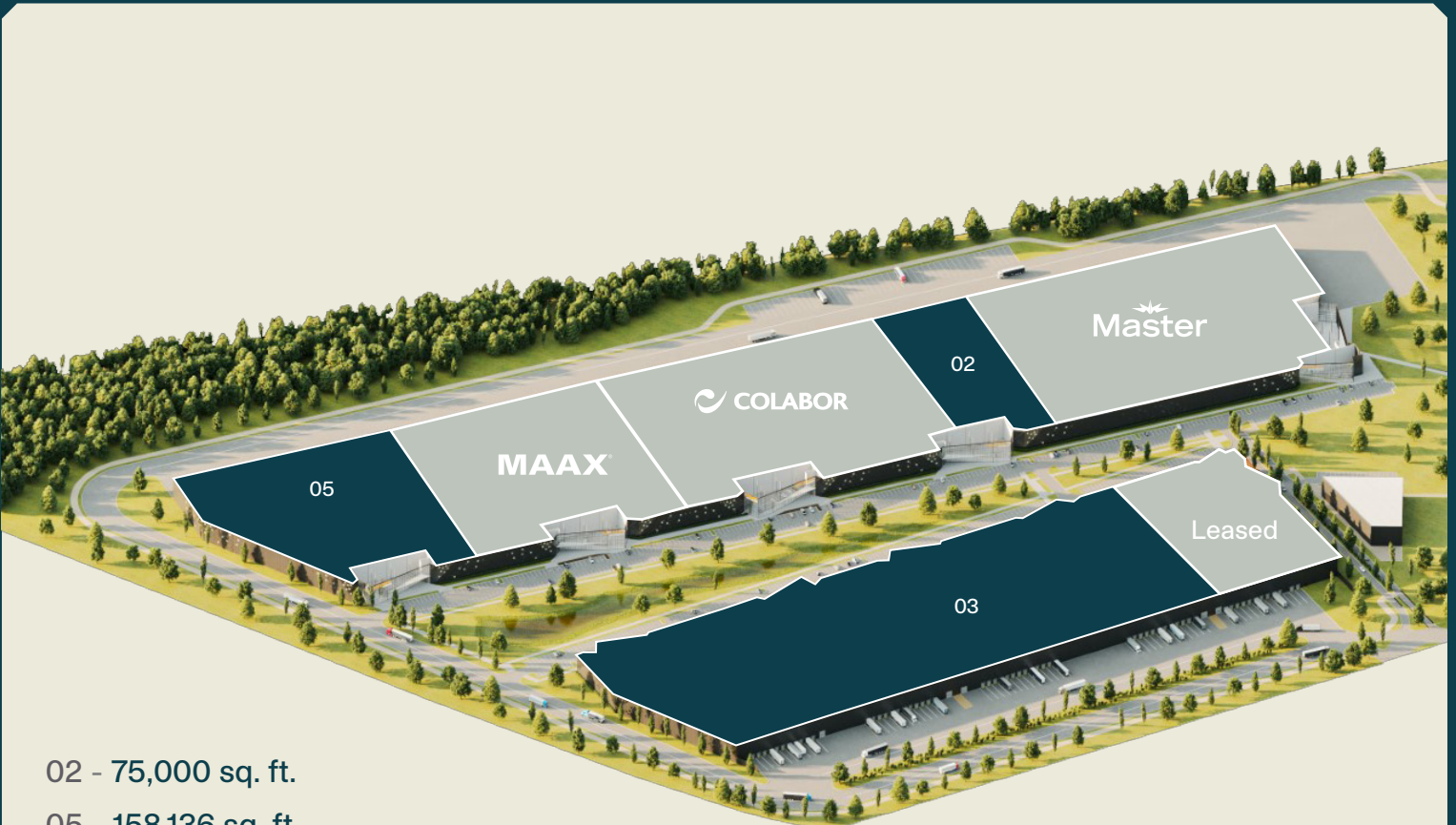
## AVAILABLE SPACE

- A** Building A 233,136 sq. ft.
- B** Building B 489,801 sq. ft.



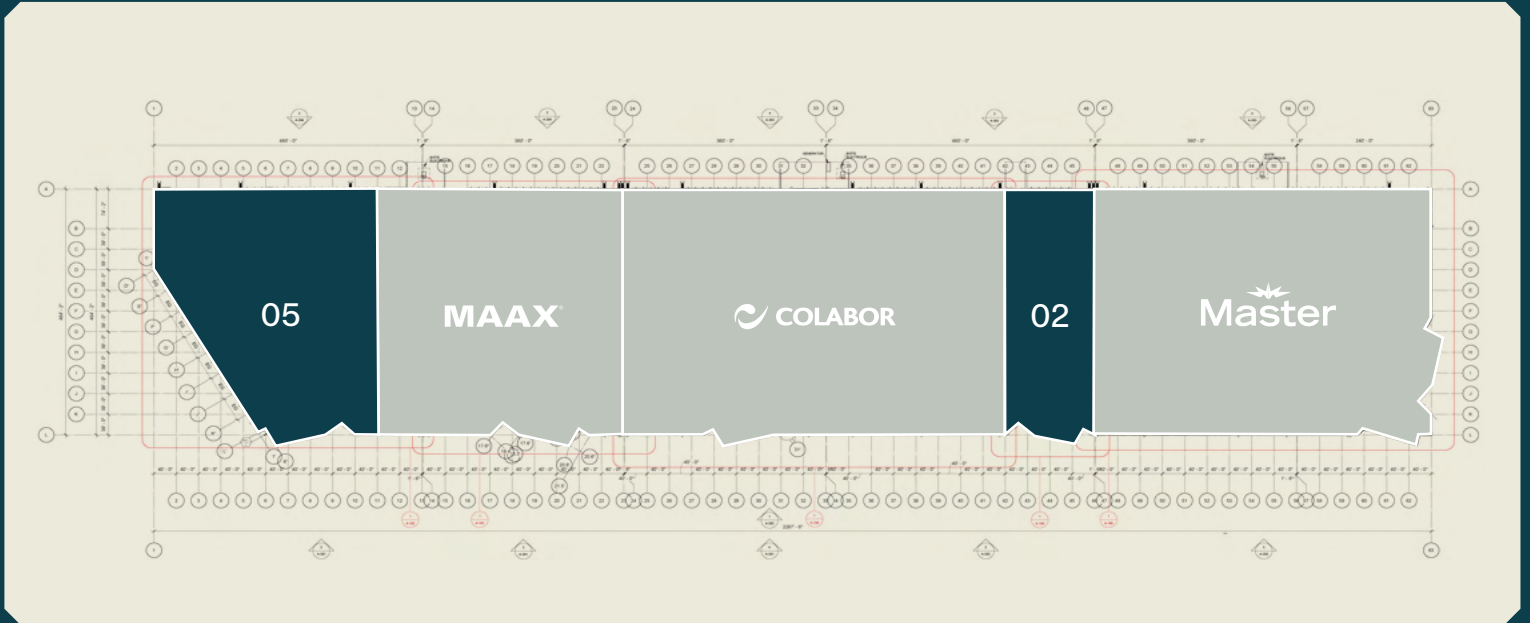
AVAILABLE SPACE

- A** BUILDING A 233,136 sq. ft.
- B** BUILDING B 489,801 sq. ft.



- 02 - 75,000 sq. ft.
- 05 - 158,136 sq. ft.
- 03 - 489,801 sq. ft.

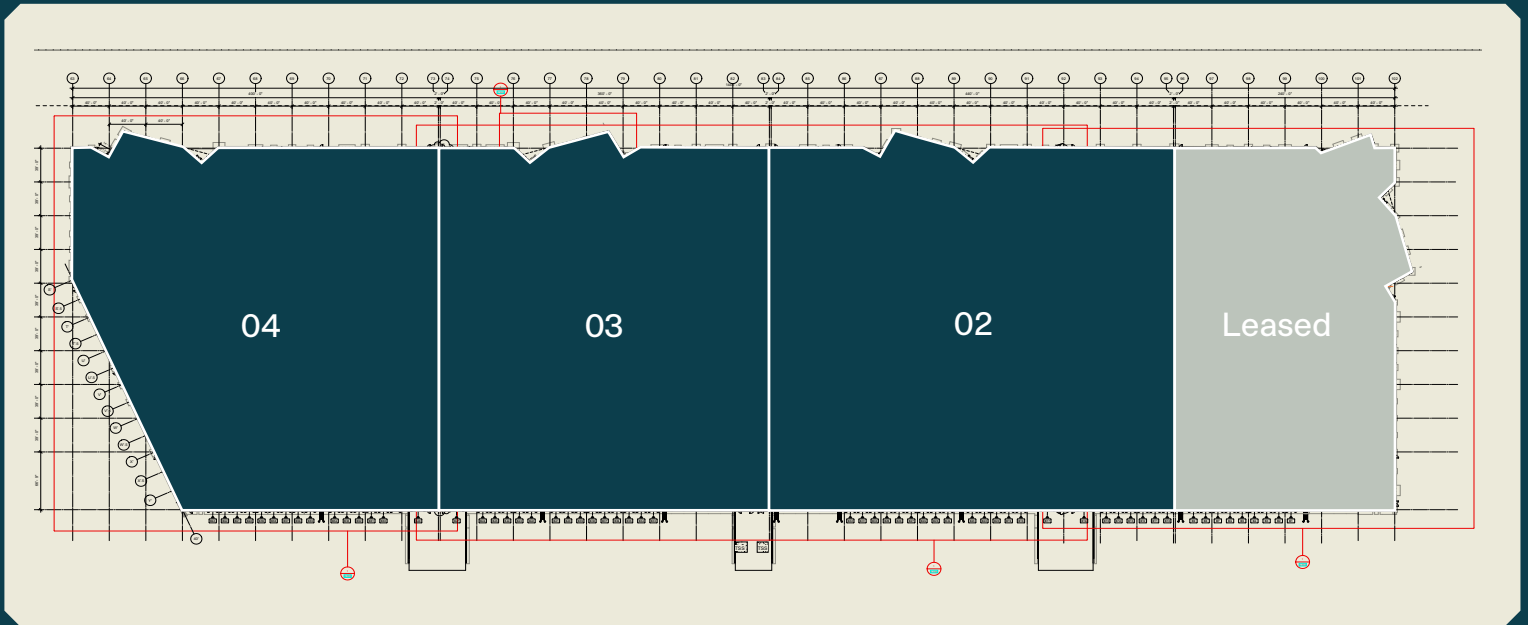
# Building A Ground Floor Plan



02 - 75,000 sq. ft.

05 - 158,136 sq. ft.

# Building B Ground Floor Plan



02 - 185,851 sq. ft.

03 - 151,645 sq. ft.

04 - 152,305 sq. ft.



# Photos



# Summary



## Projected Certifications



### LEED Gold

(Leadership in Energy and Environmental Design) is a rating system recognized in 150 countries and is designed to leave a legacy of high-quality, environmentally friendly buildings with a reduced impact on the environment.



### Zero-Carbon Building Certification

A made-in-Canada solution. Aimed at decarbonizing all buildings in Canada, Zero-Carbon Building (ZCB) standards apply to all industrial, commercial and residential buildings in the country.

## Relevant Information

- Year of construction - 2023
- Available - Immediately
- Number of potential units:  
Building A - Up to five (5) units  
Building B - Up to four (4) units
- Parking:  
Building A - Total of five hundred four (504) spaces  
Building B - Total of two hundred ninety-two (292) spaces
- Total available area - 722,937 sq. ft.  
Available space Building A - 233,136 sq. ft.  
Available space Building B - 489,801 sq. ft.  
Starting from 75,000 sq. ft.
- 8" structural slab in warehouse
- Drive-in garage doors:  
Building A - Total of five (5) doors  
Dimensions: 14'-0" x 14'-0"  
Building B - Total of four (4) doors  
Dimensions: 14'-0" x 14'-0"
- Loading dock doors:  
Building A - Total of ninety-five (95) doors  
Dimensions: 9'-0" x 11'-3"  
Building B - Total of sixty (60) doors  
Dimensions: 9'-0" x 11'-3"
- Hydraulic vertical platform levelers:  
Capacity - 40,000 lbs.
- Warehouse clear height - 40'-0"
- Fire protection - ESFR sprinkler system
- Electrical entry to building:  
Building A - 10,000 A  
Building B - 5,000 A
- Warehouse lighting - LED producing 300 lux
- Bay sizes:  
Building A - 40'-0" x 39'-0"  
Building B - 40'-0" x 36'-0"

# MONTONI

For any questions related to this  
presentation, please contact:  
[abouchard@groupemontoni.com](mailto:abouchard@groupemontoni.com)