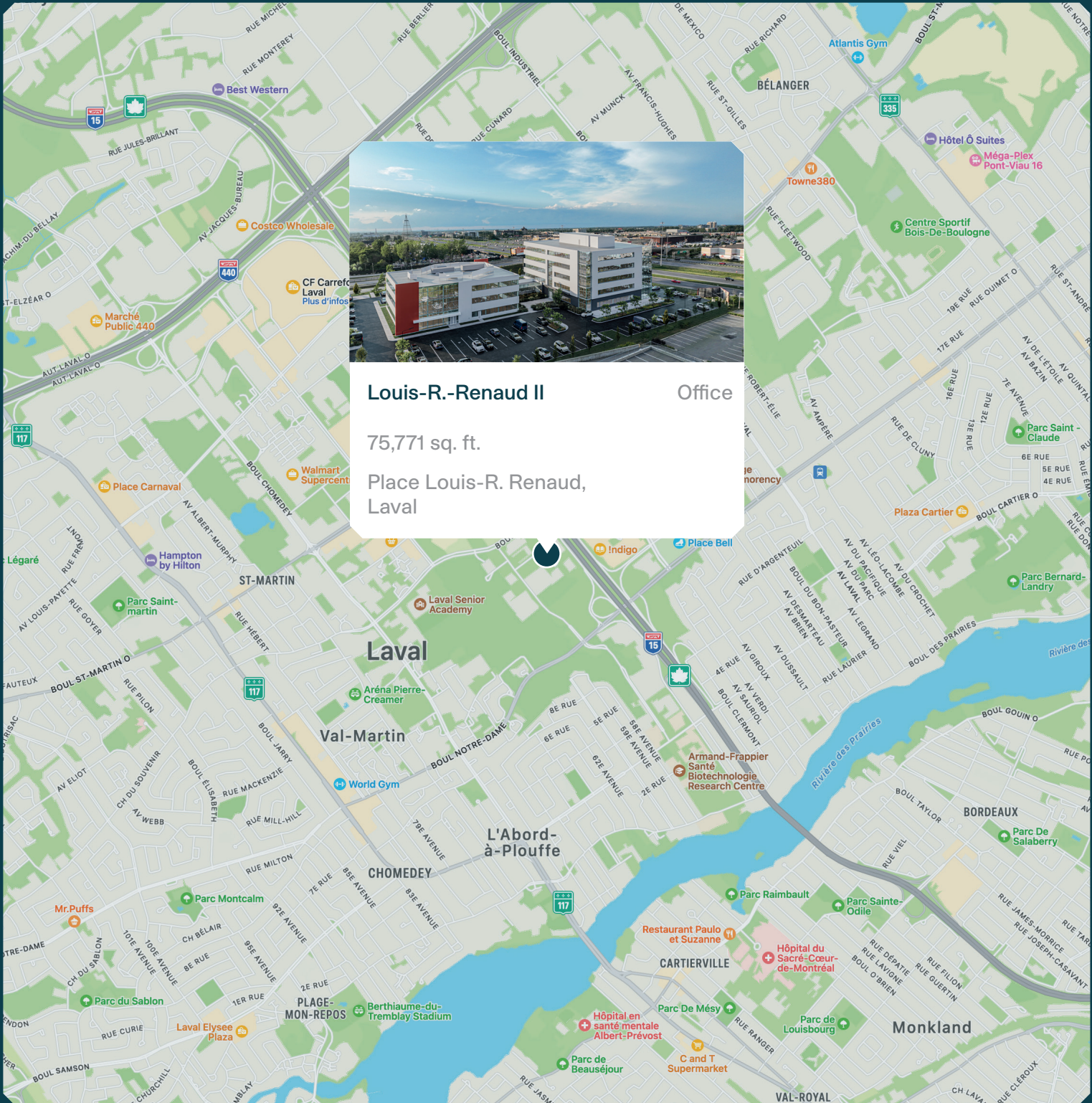


Louis-R.-Renaud II

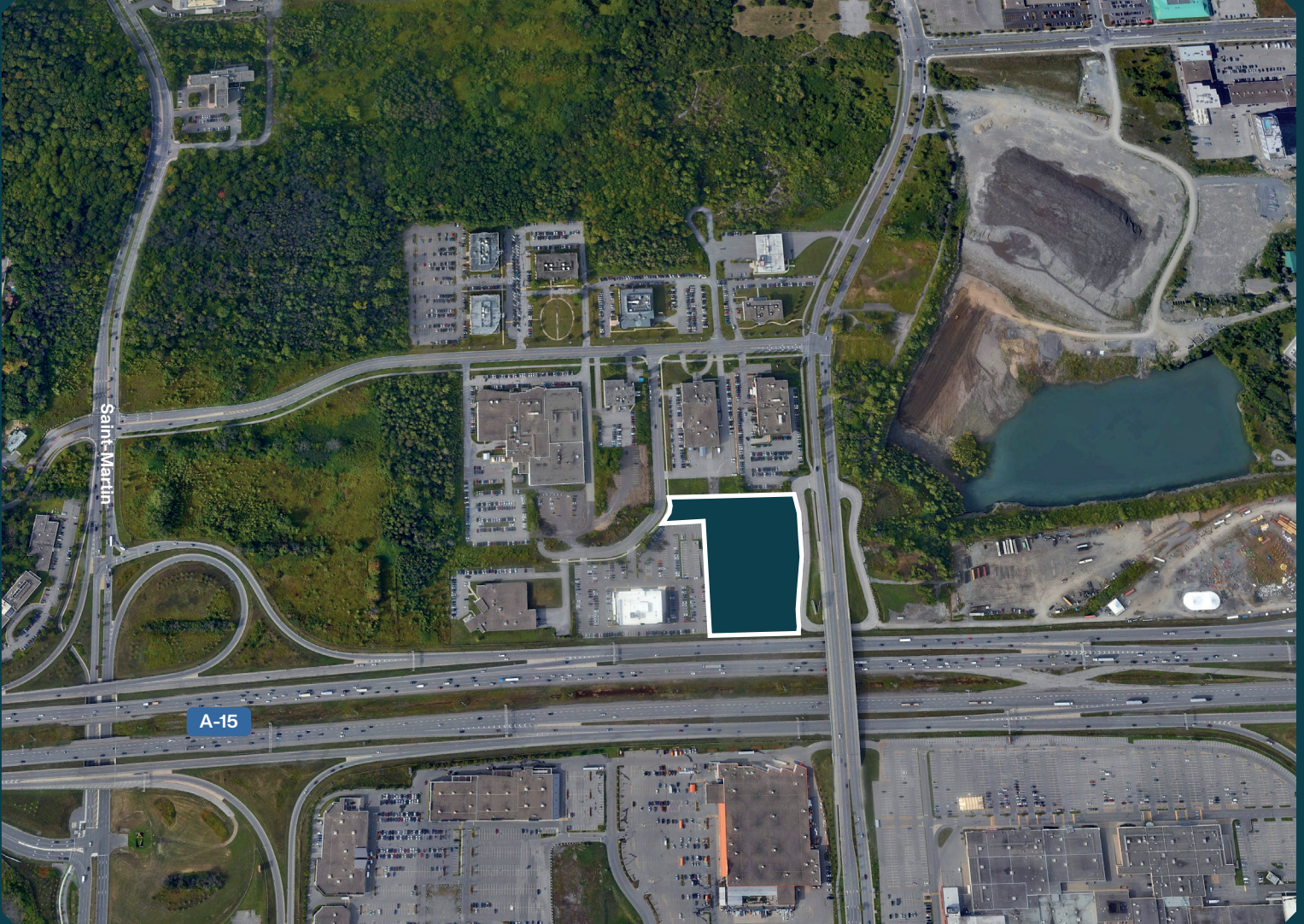




Louis-R.-Renaud II Office
75,771 sq. ft.
Place Louis-R. Renaud,
Laval



Neighborhood Map



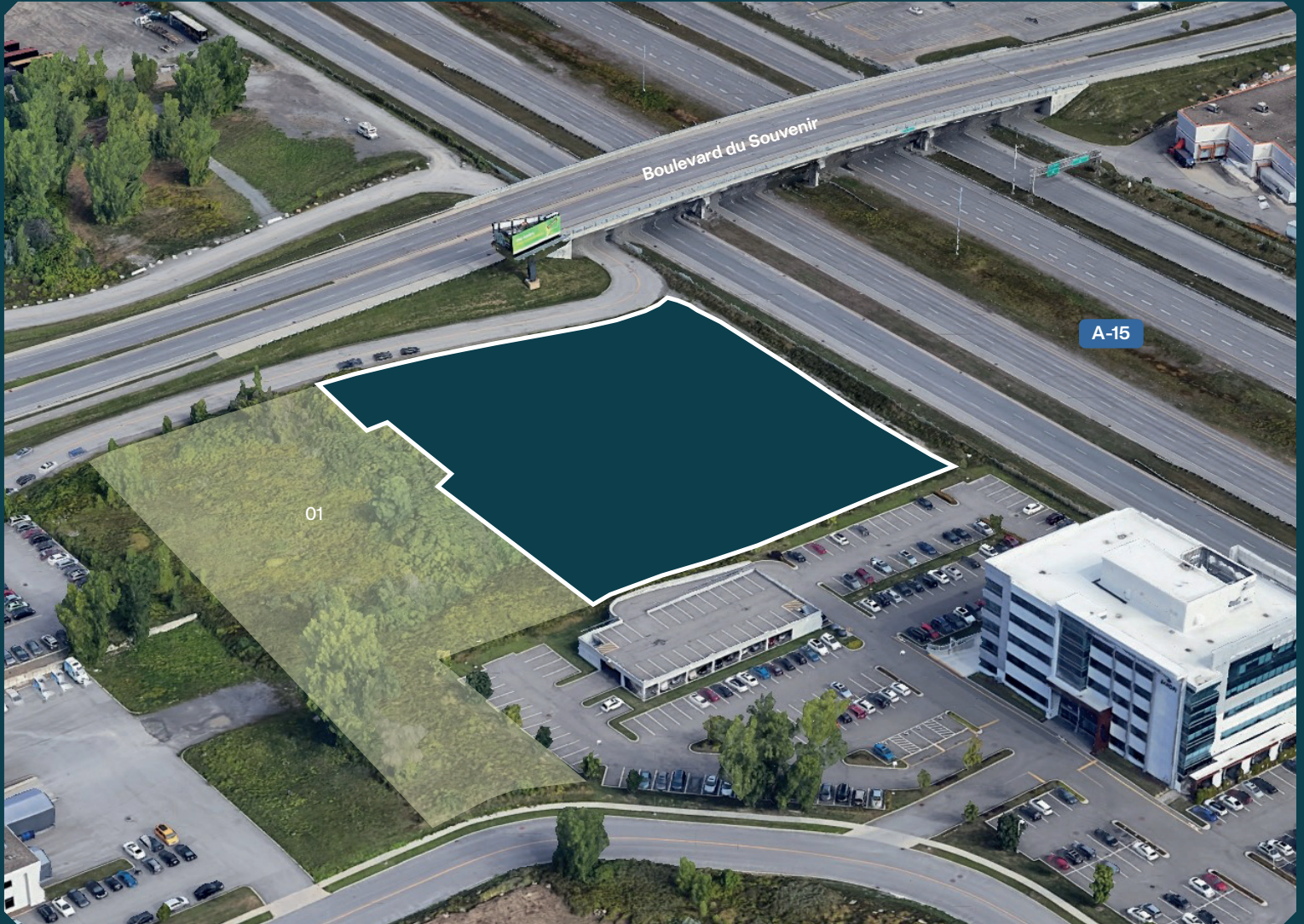
BUILDING

Total space: 167,800 sq. ft.
Available space : 75,771 sq. ft.
GF : 15,451 sq. ft.
2nd floor : 15,080 sq. ft.
3rd floor : 15,080 sq. ft.
4th floor : 15,080 sq. ft.
5th floor : 15,080 sq. ft.

ACCESS

Place Louis-R.-Renaud, Laval
Parking spaces available
Easy access to highways 15, 440
Bus routes 26, 40, 46, 60

3D plan

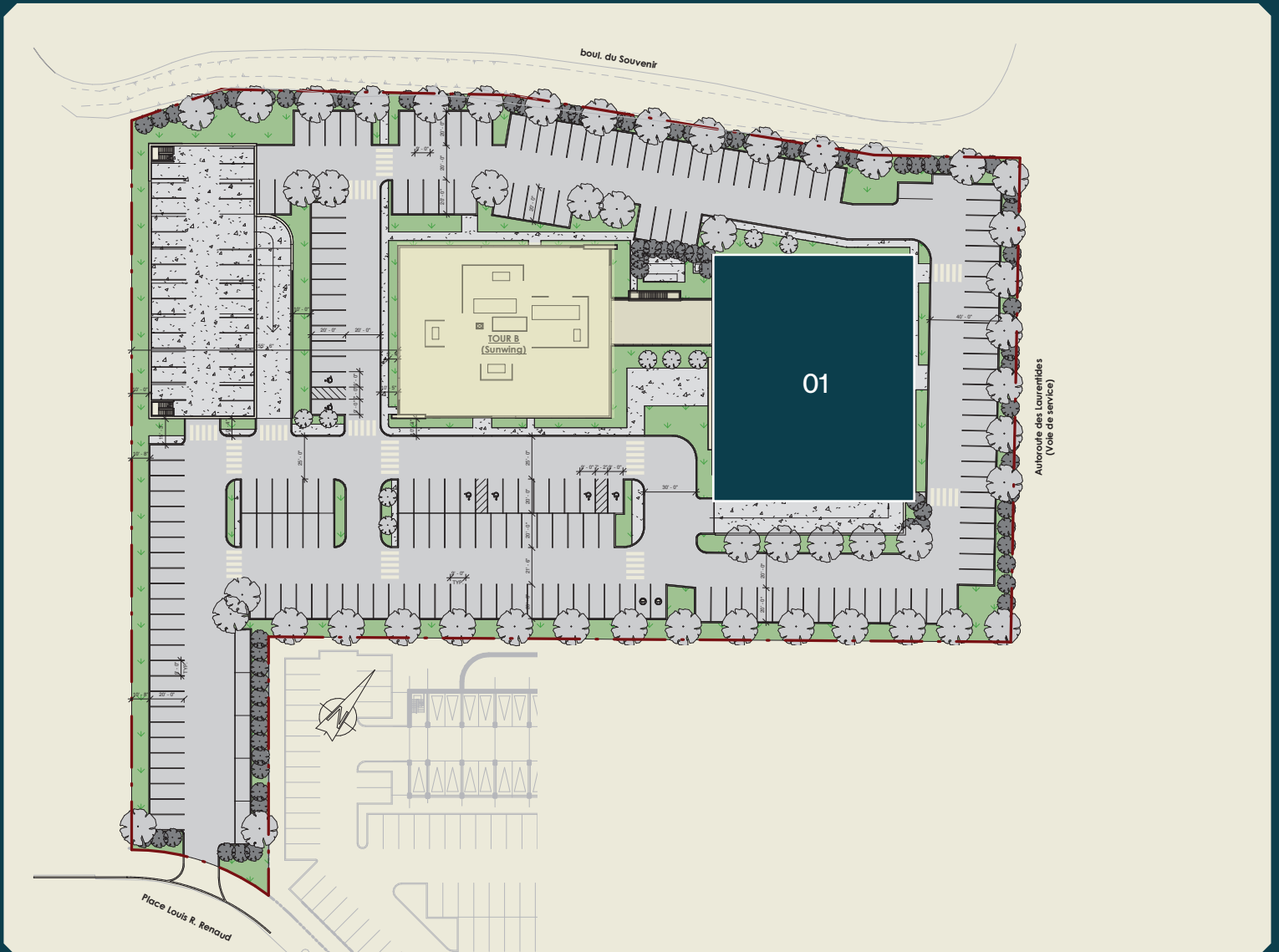


01 Sunwing - en construction

Perspectives

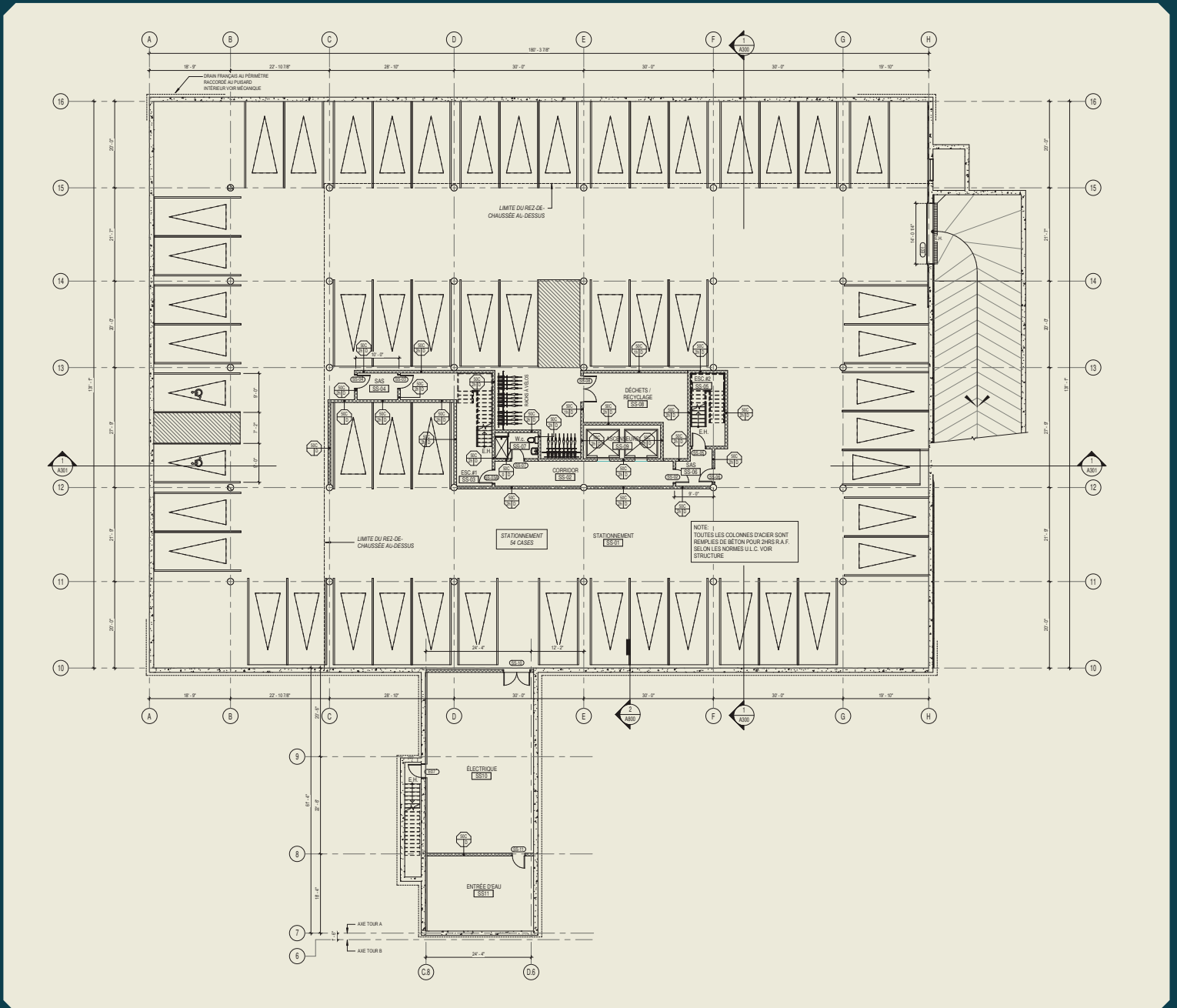


Site plan

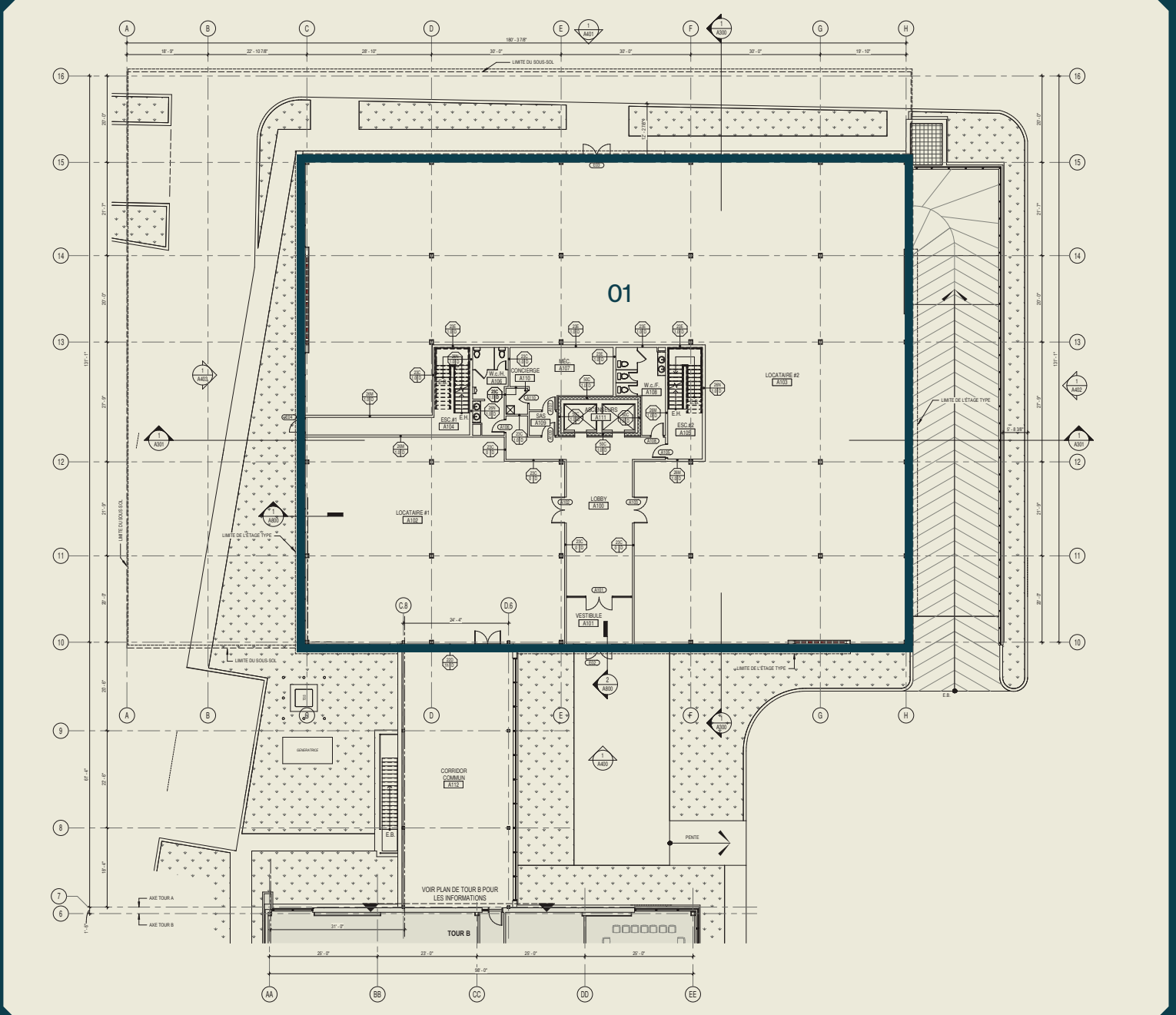


01 - Louis-R.-Renaud II - 76,733 sq. ft.

Underground parking plan

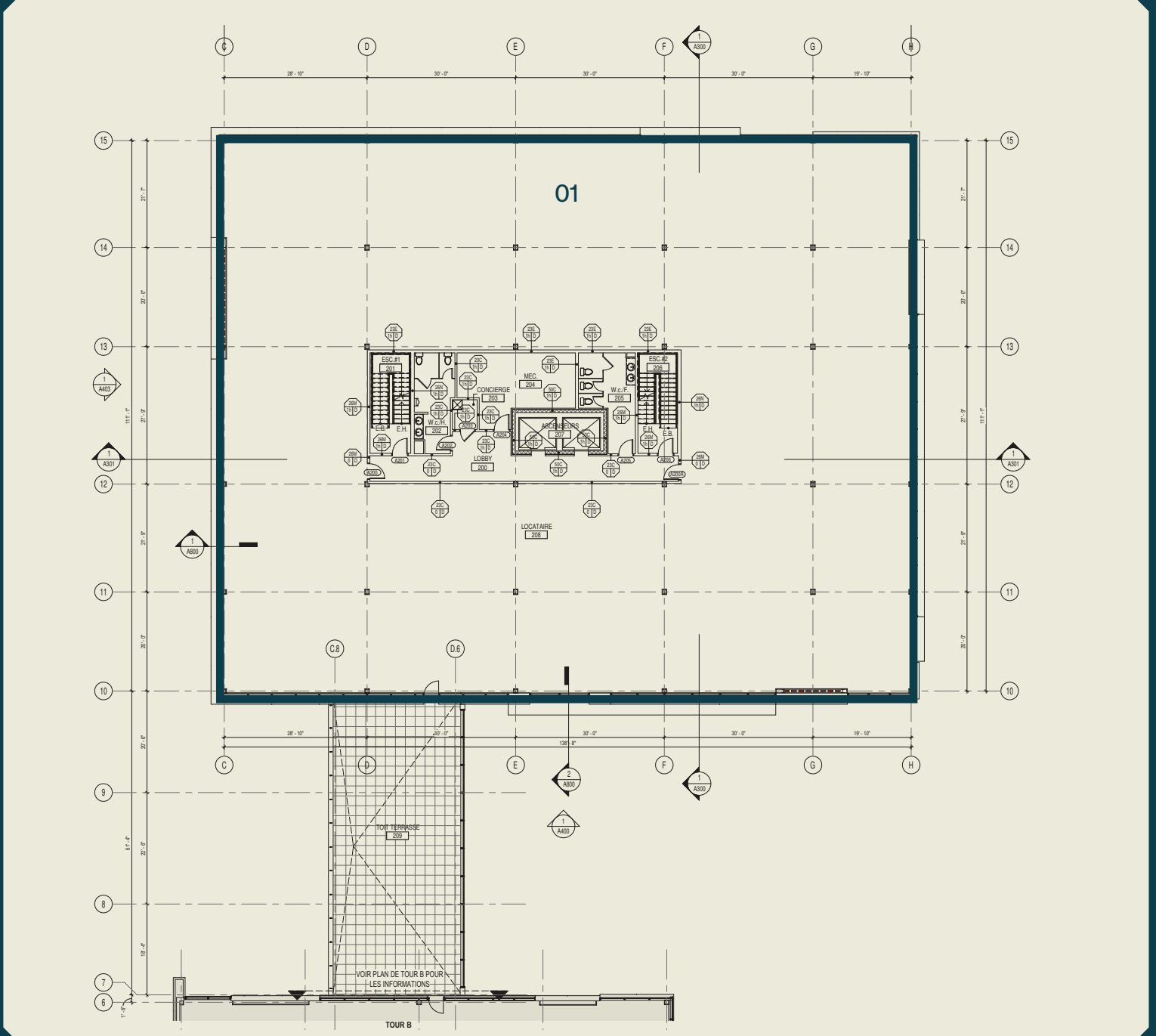


Ground floor plan



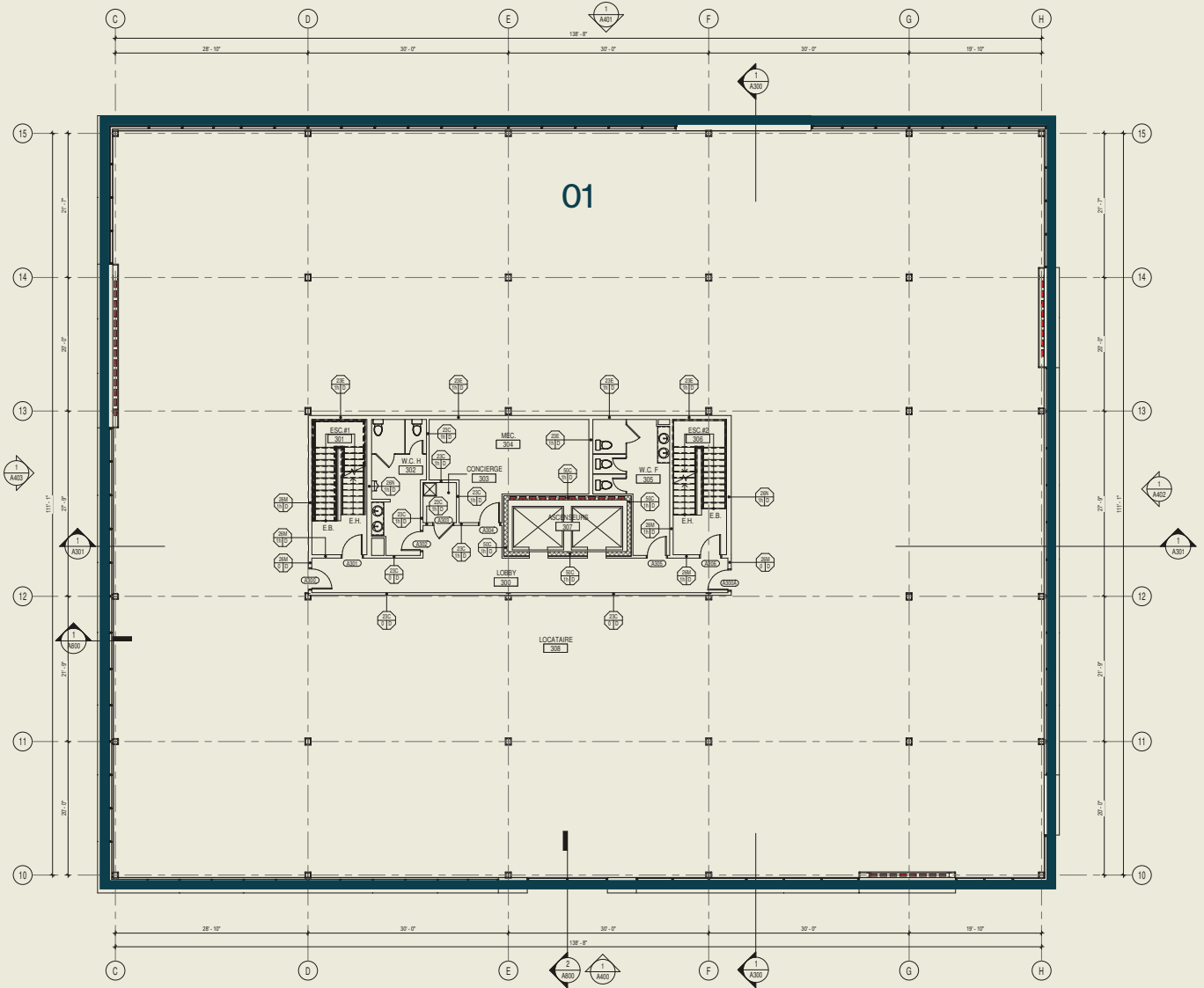
01 - 15,451 sq. ft.

2nd floor plan



01 - 15,080 sq. ft.

3rd to 5th floor plan



01 - 15,080 sq. ft.

Summary



Certifications aimed

Relevant Information



LEED

(Leadership in Energy and Environmental Design) is a rating system recognized in 150 countries and is designed to leave a legacy of high-quality, environmentally friendly buildings with a reduced impact on the environment.

- Total space : 167,800 sq. ft.
- Available space : 75,771 sq. ft.
 - RDC : 15,451 sq. ft.
 - 2e étage : 15,080 sq. ft.
 - 3e étage : 15,080 sq. ft.
 - 4e étage : 15,080 sq. ft.
 - 5e étage : 15,080 sq. ft.

MONTONI

For any questions related to this
presentation, please contact:
abouchard@groupemontoni.com