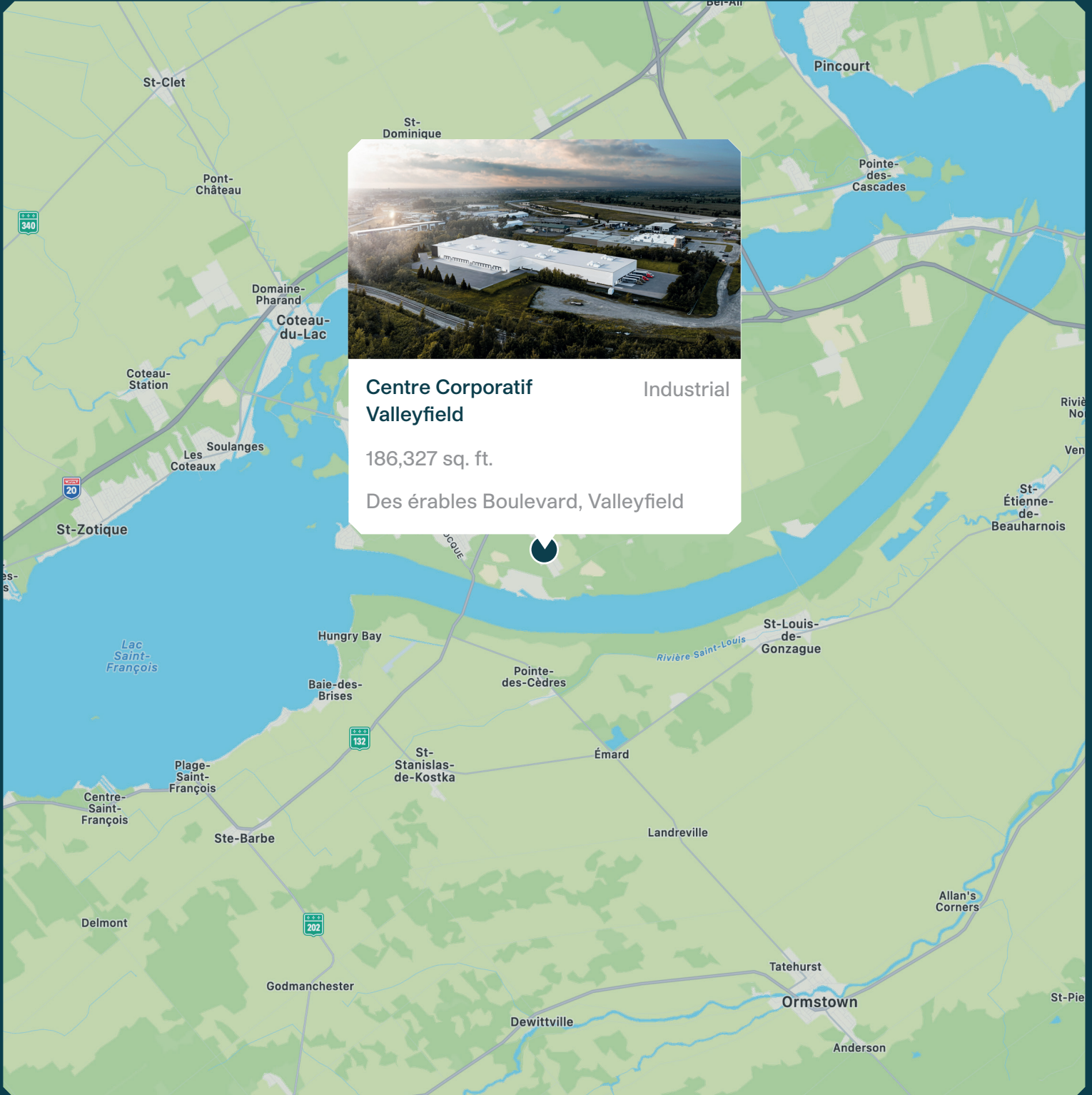


Centre Corporatif Valleyfield



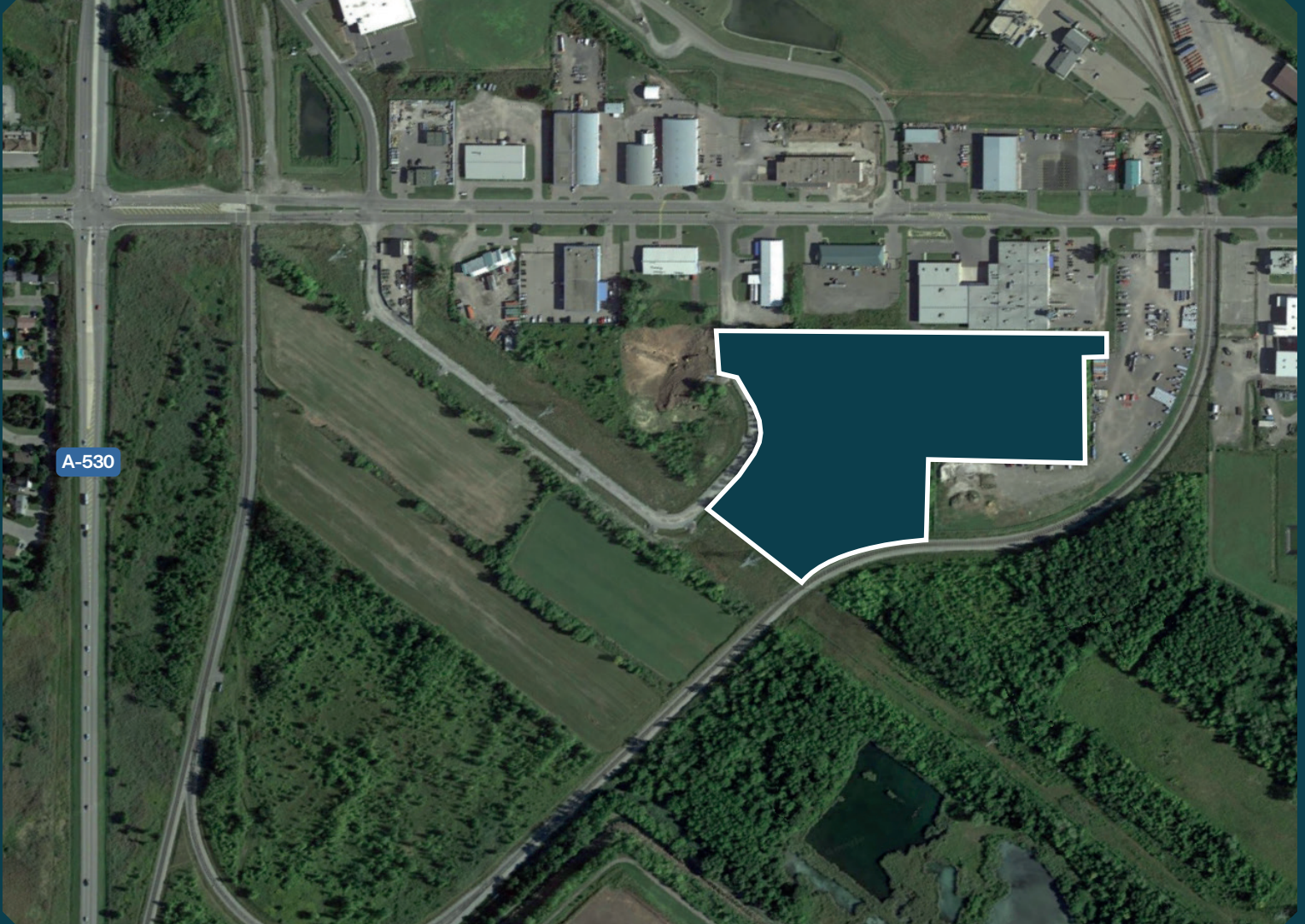
MONTONI

Building on our word
for tomorrow



Centre Corporatif Valleyfield Industrial
186,327 sq. ft.
Des érables Boulevard, Valleyfield

Neighborhood Map



LAND

Total area - 499,074 sq. ft.

BUILDING

Available area - 186,327 sq. ft.

ACCESS

Des érables Boulevard, Valleyfield,
Parking spaces available
Easy access to highways 530, 132

Summary



Certifications aimed

Relevant Information



LEED Gold

(Leadership in Energy and Environmental Design) is a rating system recognized in 150 countries and is designed to leave a legacy of high-quality, environmentally friendly buildings with a reduced impact on the environment.

- Number of potential units: Three (3)
- Total land area: 499,074 sq. ft.
- Total building area: 186,327 sq. ft.
- Available space: 186,327 sq. ft.
- Drive-in garage doors:
Total of three (3) doors - Dim : 14'-0" x14'-0"
- Loading dock doors :
Total de thirty one (31) doors -
Dim : 9'-0" x 10'-0"
- Electrical entry to building : 1 200 A
- Bay sizes : 38' x 38'

MONTONI

For any questions related to this
presentation, please contact:
abouchard@groupemontoni.com